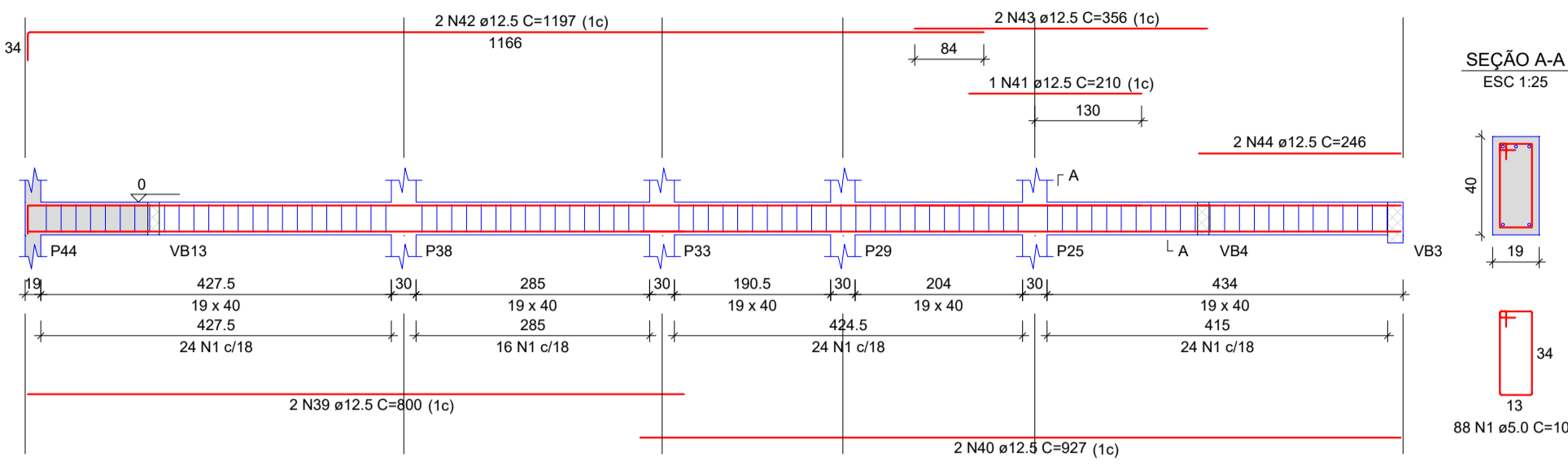
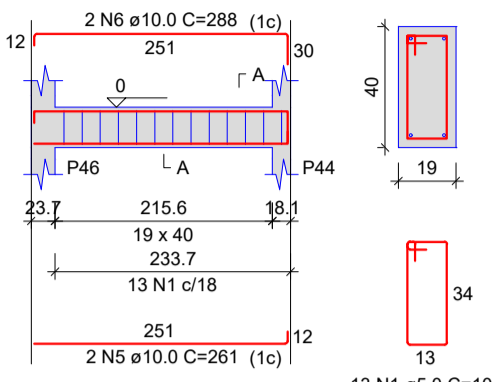


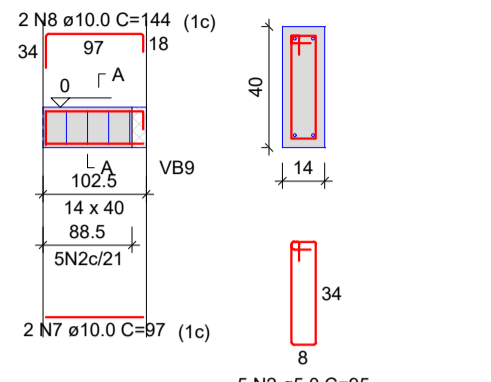
VB20  
ESC 1:75



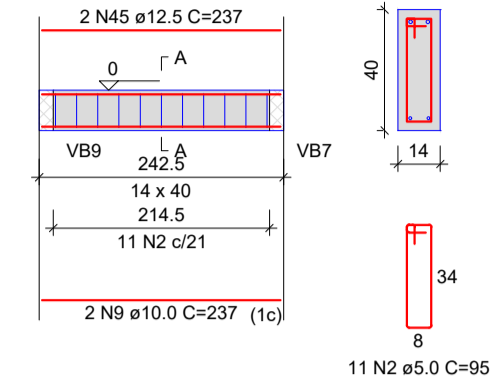
VB21  
ESC 1:75



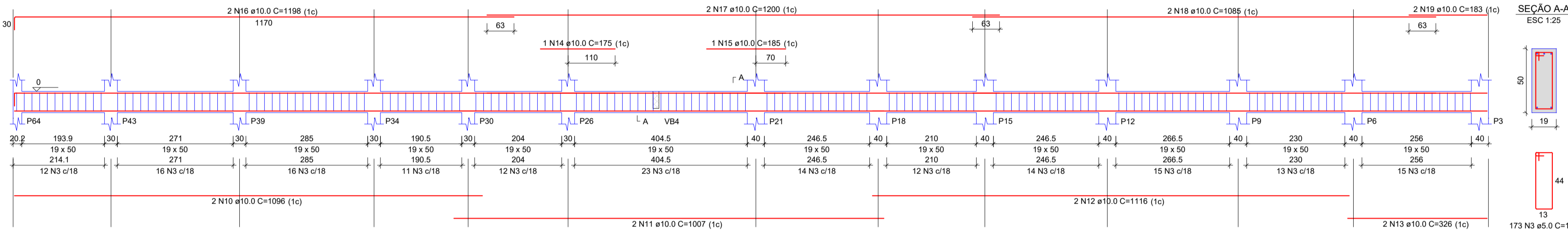
VB22  
ESC 1:75



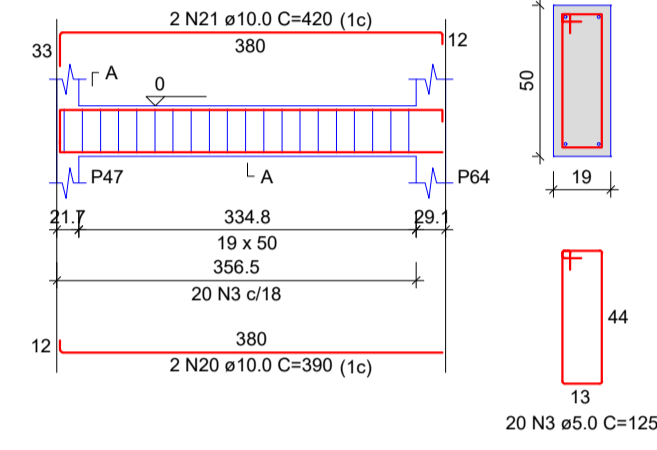
VB23  
ESC 1:75



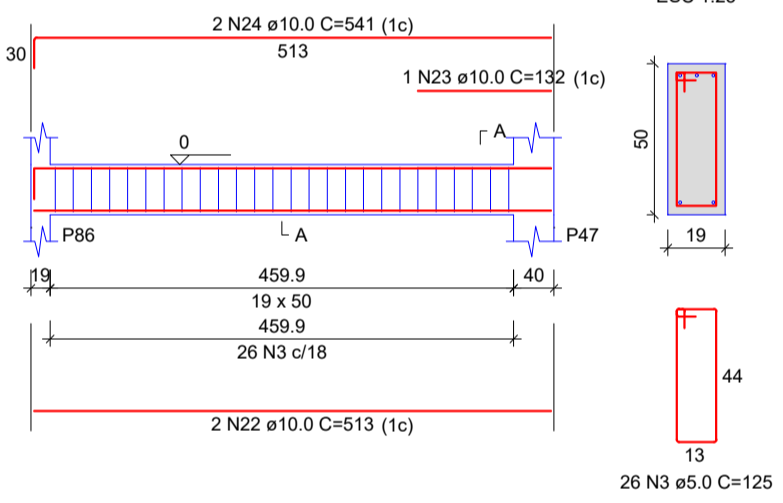
VB24  
ESC 1:75



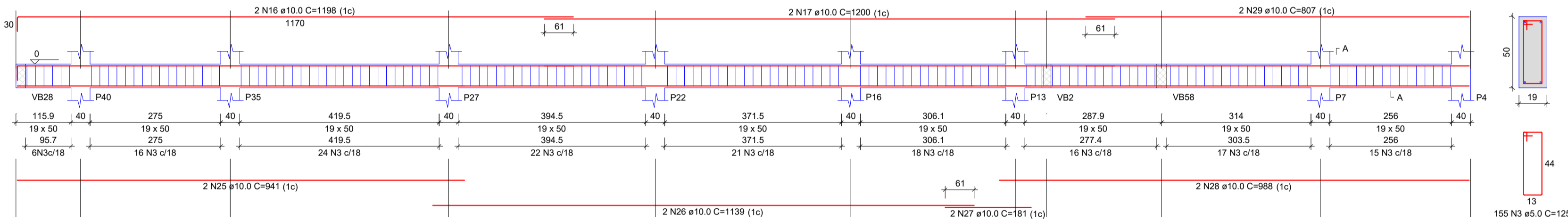
VB25  
ESC 1:75



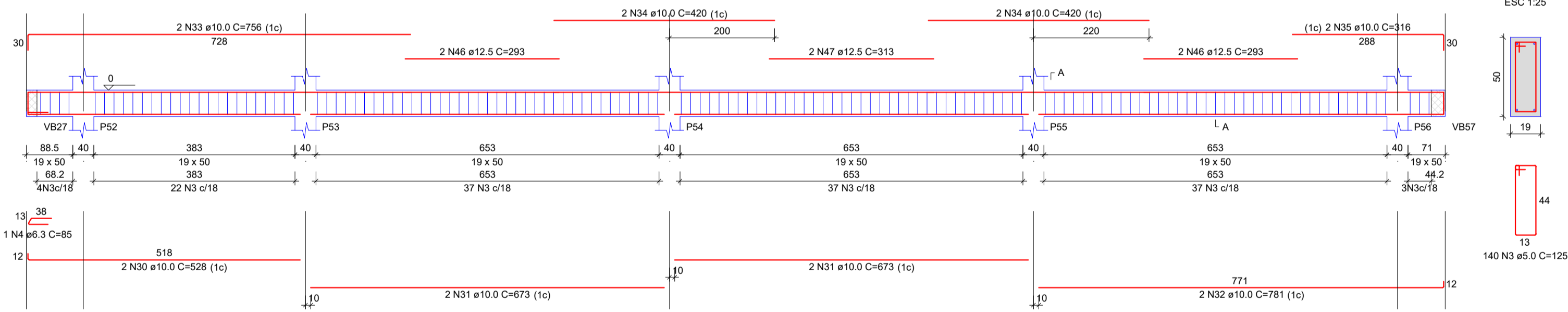
VB26  
ESC 1:75



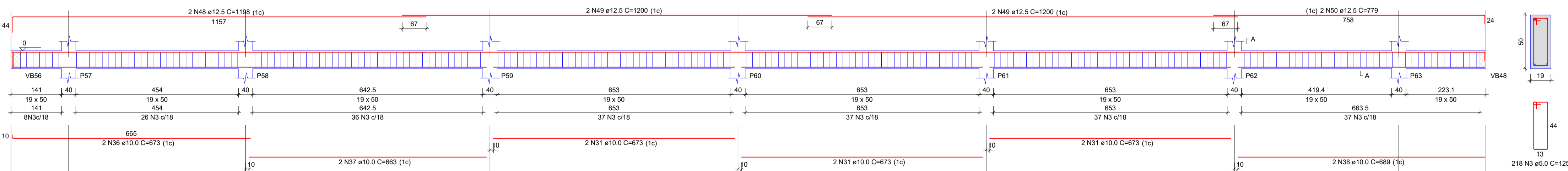
VB27  
ESC 1:75



VB28  
ESC 1:75



VB29  
ESC 1:75



RELAÇÃO DO AÇO

ACO	N	DIAM (mm)	QUANT	C.LIMIT (cm)	C.TOTAL (cm)
CA60	1	5.0	101	105	10605
	2	5.0	16	95	1520
	3	5.0	732	125	91500
CA50	4	6.3	85	85	6875
	5	10.0	2	261	522
	6	10.0	2	288	576
	7	10.0	2	97	194
	8	10.0	2	144	288
	9	10.0	2	237	474
	10	10.0	2	1096	2192
	11	10.0	2	1007	2014
	12	10.0	2	237	474
	13	10.0	2	326	652
	14	10.0	1	175	175
	15	10.0	1	185	185
	16	10.0	4	1198	4792
	17	10.0	4	1200	4800
	18	10.0	2	1085	2170
	19	10.0	2	183	366
	20	10.0	2	390	780
	21	10.0	2	420	840
	22	10.0	2	513	1026
	23	10.0	1	132	132
	24	10.0	2	541	1082
	25	10.0	2	941	1882
	26	10.0	2	1139	2278
	27	10.0	2	181	362
	28	10.0	2	866	1732
	29	10.0	2	807	1614
	30	10.0	2	528	1056
	31	10.0	10	673	6730
	32	10.0	2	761	1522
	33	10.0	2	756	1512
	34	10.0	4	420	1680
	35	10.0	2	316	632
	36	10.0	2	673	1346
	37	10.0	2	663	1326
	38	10.0	2	889	1778
	39	12.5	2	800	1600
	40	12.5	2	927	1854
	41	12.5	1	210	210
	42	12.5	2	1197	2394
	43	12.5	2	356	712
	44	12.5	2	246	492
	45	12.5	2	237	474
	46	12.5	4	293	1172
	47	12.5	2	313	626
	48	12.5	2	1198	2396
	49	12.5	4	1200	4800
	50	12.5	2	779	1558

RESUMO DO AÇO

ACO	DIAM (mm)	C.TOTAL (m)	PESO + 0% (kg)
CA50	6.3	0.9	0.2
	10.0	508.3	313.4
	12.5	182.9	176.2
CA60	5.0	1036.3	159.7
PESO TOTAL (kg)			
CA50		489.7	
CA60		159.7	

Volume de concreto (C-30) = 15.19 m<sup>3</sup>  
Área de forma = 191.86 m<sup>2</sup>

**PREFEITURA MUNICIPAL DE BADY BASSITT - SP**  
CNPJ 45.093.267/0001-09

**CRS ENGENHARIA**

---

Descrição: **ESTRUTURA DE CONCRETO**  
EDIFICAÇÃO: DET. VIGAS BALDRAME 02-05

Folha: **CON 08/31**

---

Objeto: **CONSTRUÇÃO DE UMA ESCOLA DE ENSINO FUNDAMENTAL I NA ÁREA INSTITUCIONAL DO JARDIM TANGARÁ, EM BADY BASSITT - SP**

Projetista: **PREFEITURA MUNICIPAL DE BADY BASSITT - SP**

Projetado por: **JOSMAR NASCIMENTO RODRIGUES**  
ENGENHEIRO CIVIL  
CREA 5.078/84-SP

Endereço: **ENTRE RUA 02 E RUA 03, LOTEAMENTO JD. TANGARÁ**

Município: **BADY BASSITT** Estado: **SP**

Matrícula / Transcrição: **-** Contrato nº: **-**

Coordenadas Geográficas / SAD69: **20°55'35.8"S 49°27'52.0"W**

Escala: **INDICADAS** Data: **04/11/2021** Data Última Revisão: **-** ART nº: **2.802.723.021.146.630-9**