

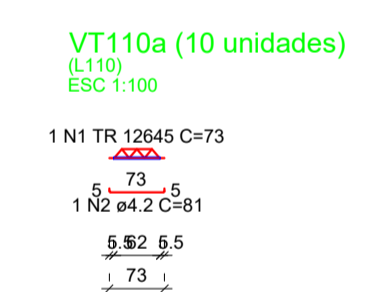
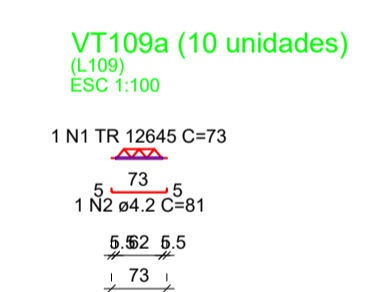
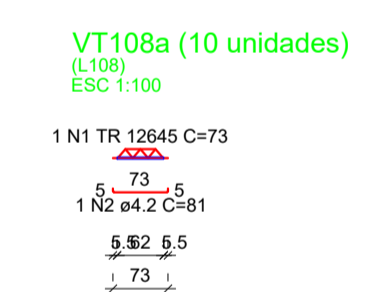
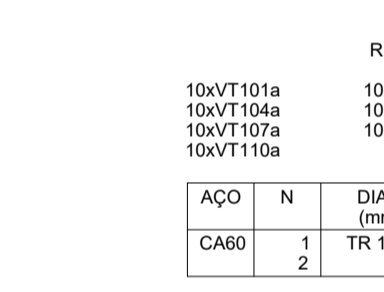
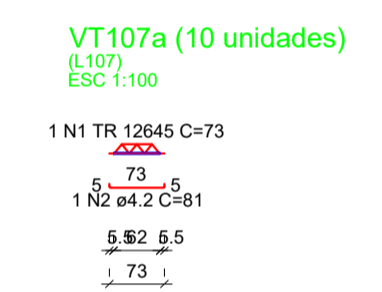
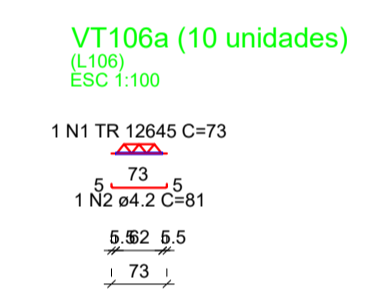
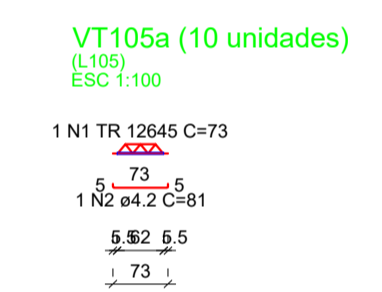
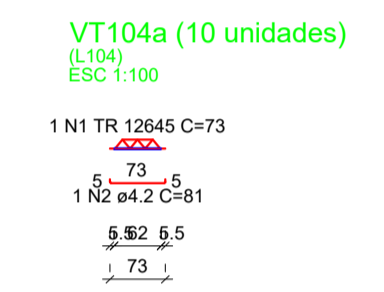
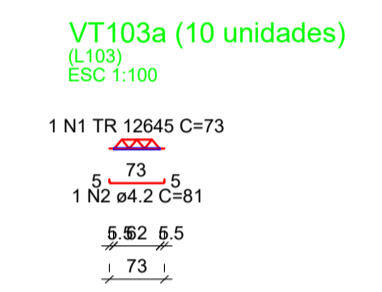
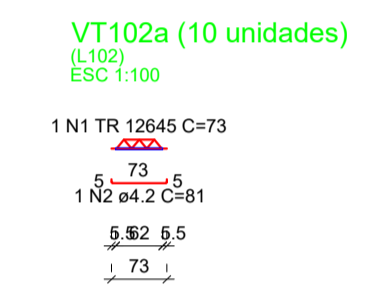
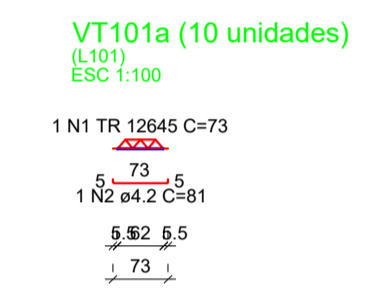
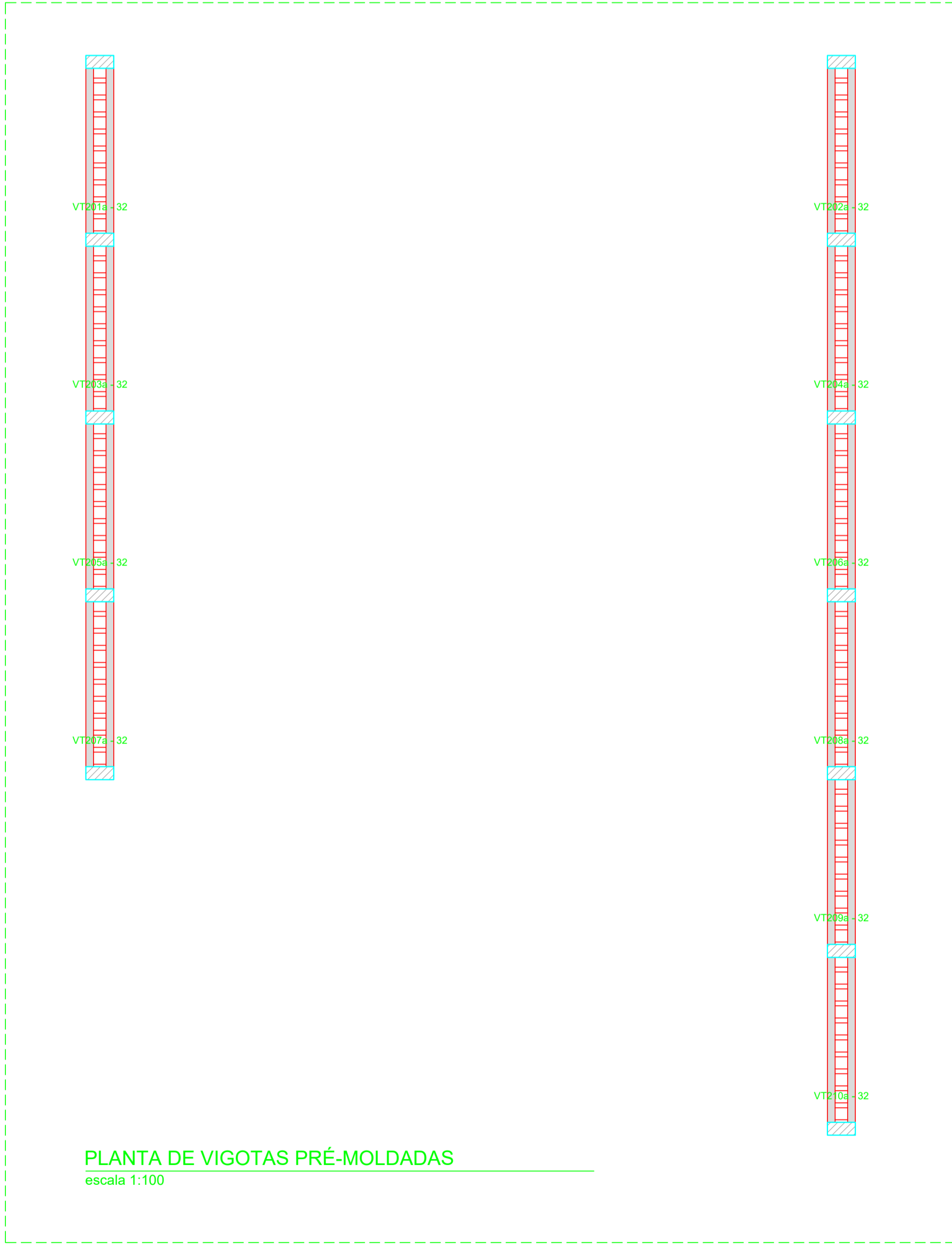
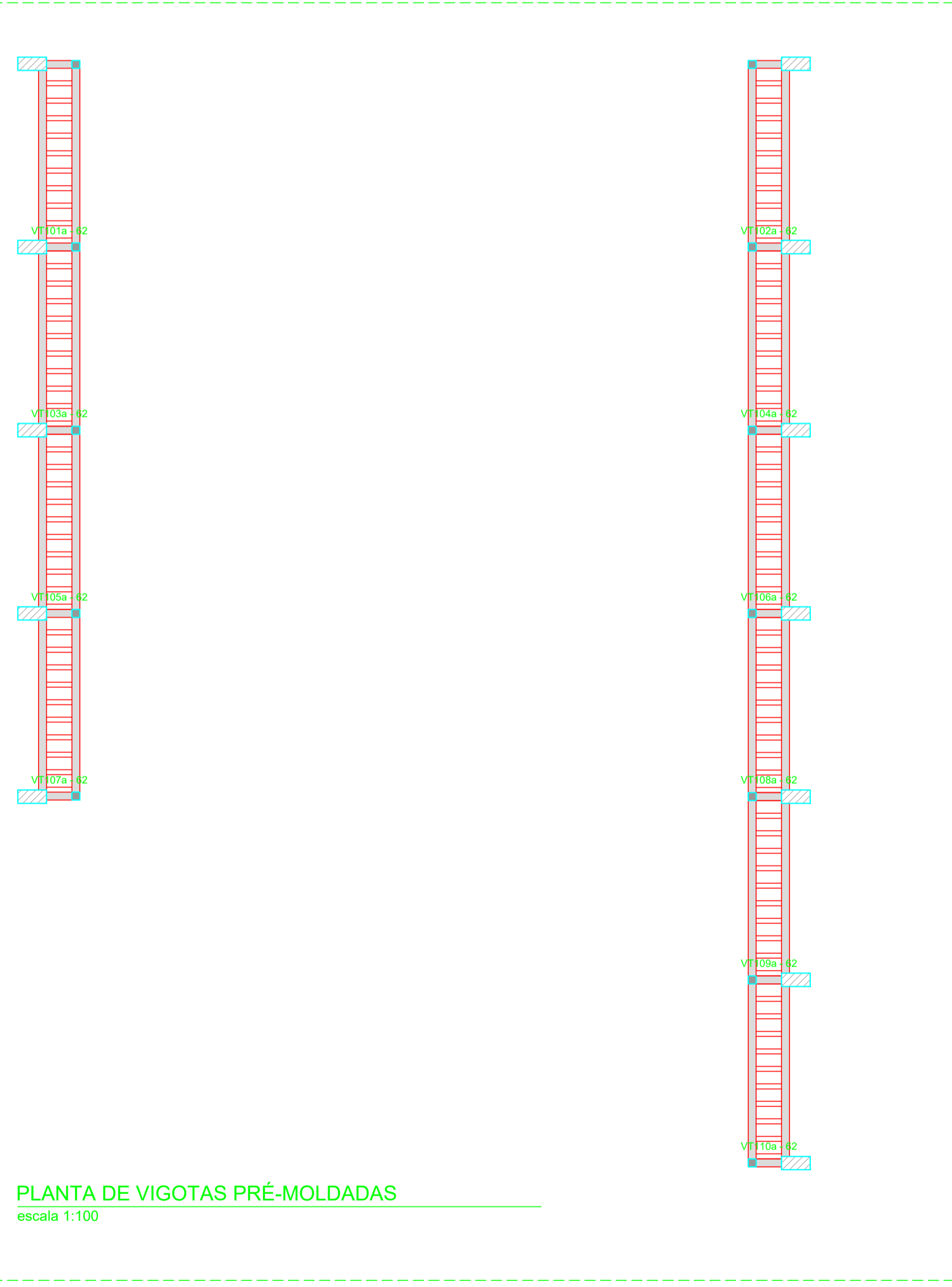
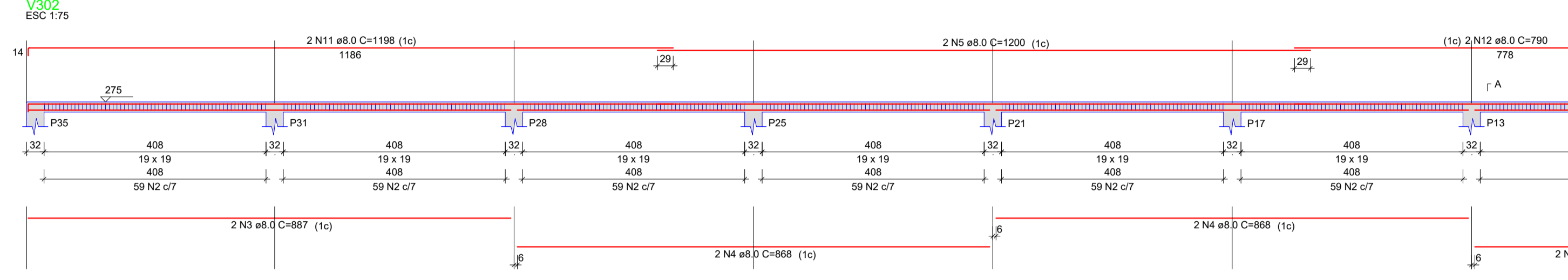
RELAÇÃO DO AÇO

ACO	N	DIAM (mm)	QUANT	C.UNIT (cm)	C.TOTAL (cm)
CA60	1	5.0	282	85	23970
CA50	3	8.0	6	887	5322
	4	8.0	6	868	5208
	5	8.0	6	1200	7200
	6	8.0	2	358	716
	7	8.0	2	950	3600
	8	8.0	2	1198	2396
	9	8.0	2	788	1576
	10	8.0	2	447	894
	11	8.0	2	1198	2396
	12	8.0	2	790	1580

RESUMO DO AÇO

ACO	DIAM (mm)	C.TOTAL (m)	PESO + 0% (kg)
CA50	8.0	310.9	122.7
CA60	5.0	499.9	77.1
PESO TOTAL (kg)			200.0
CA50		122.7	
CA60		77.1	

Volume de concreto (C-30) = 3.73 m³  
Área de forma = 53.89 m²



RELAÇÃO DO AÇO

ACO	N	DIAM (mm)	QUANT	C.UNIT (cm)	C.TOTAL (cm)
10xVT101a					10xVT103a
10xVT104a					10xVT105a
10xVT107a					10xVT106a
10xVT110a					10xVT109a

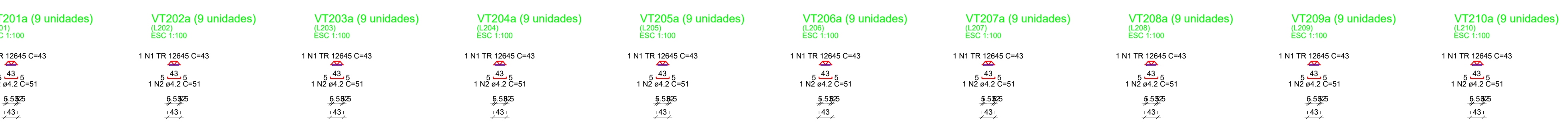
RESUMO DO AÇO

ACO	DIAM (mm)	C.TOTAL (m)	PESO + 0% (kg)
CA60	4.2	81	8.8
TR 12645		73	65
PESO TOTAL (kg)			73.8
CA60		73.8	

Volume de concreto (C-30) = 0.00 m³  
Área de forma = 0.00 m²

PLANTA DE VIGOTAS PRÉ-MOLDADAS  
escala 1:100

PLANTA DE VIGOTAS PRÉ-MOLDADAS  
escala 1:100



RELAÇÃO DO AÇO

ACO	N	DIAM (mm)	QUANT	C.UNIT (cm)	C.TOTAL (cm)
CA60	1	TR 12645	90	43	3870
	2	4.2	90	51	4590

RESUMO DO AÇO

ACO	DIAM (mm)	C.TOTAL (m)	PESO + 0% (kg)
CA60	4.2	45.9	5
TR 12645		38.7	34.4
PESO TOTAL (kg)			39.4
CA60		39.4	

Volume de concreto (C-30) = 0.00 m³  
Área de forma = 0.00 m²

**PREFEITURA MUNICIPAL DE BADY BASSITT - SP**  
CNPJ 45.093.267/0001-09

**CRS ENGENHARIA**

Projeto: **ESTRUTURA DE CONCRETO**  
QUADRA: DET. VIGAS SUPERIORES 02-02 E DET. LAJES

Objeto: **CONSTRUÇÃO DE UMA ESCOLA DE ENSINO FUNDAMENTAL I NA ÁREA INSTITUCIONAL DO JARDIM TANGARÁ, EM BADY BASSITT - SP**

Proprietário: **PREFEITURA MUNICIPAL DE BADY BASSITT - SP**

Endereço: **ENTRE RUA 02 E RUA 03, LOTEAMENTO JD. TANGARÁ**

Município: **BADY BASSITT** Estado: **SP**

Matrícula / Transcrição: **-** Contrato nº: **-**

Coordenadas Geográficas / SAD69: **20°55'35.8"S 49°27'52.0"W**

Escala: **INDICADAS** Data: **04/11/2021** Data Última Revisão: **-** ART nº: **2.802.723.021.146.630-9**