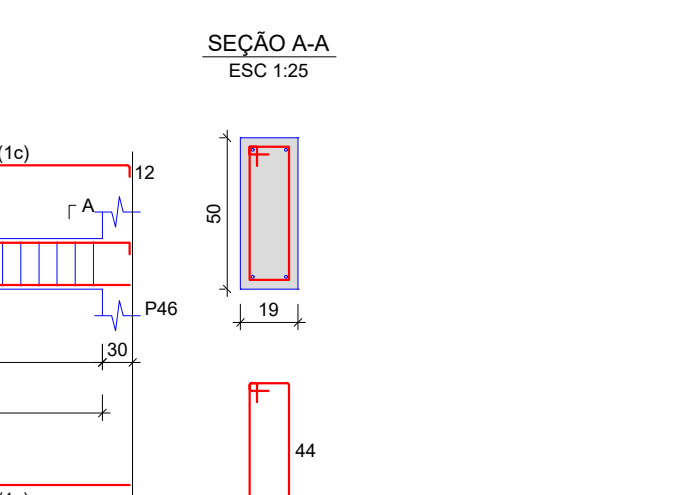
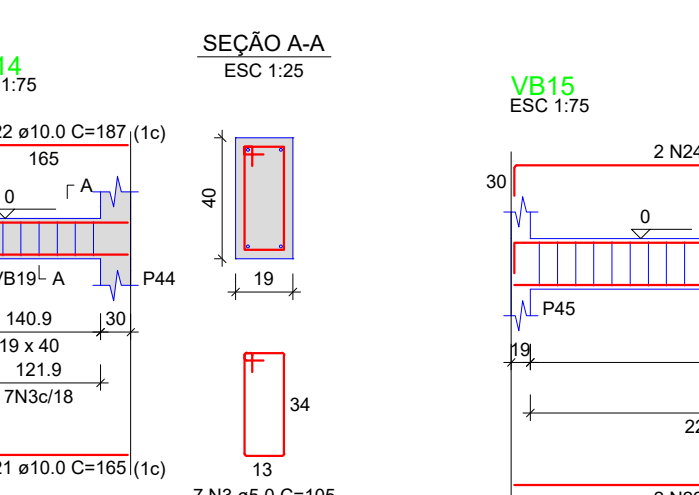
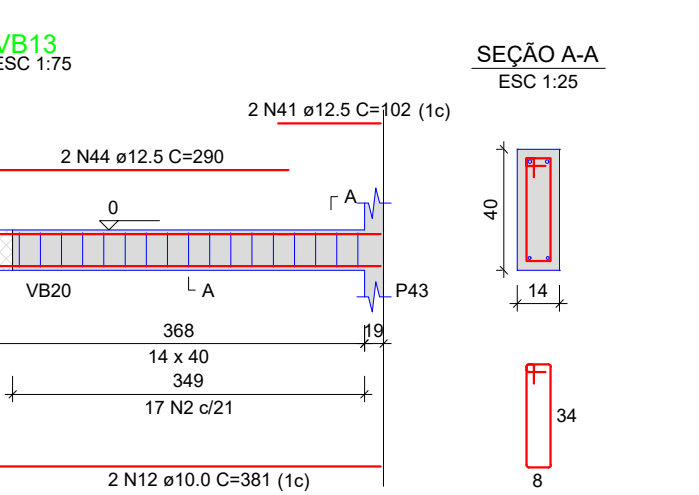
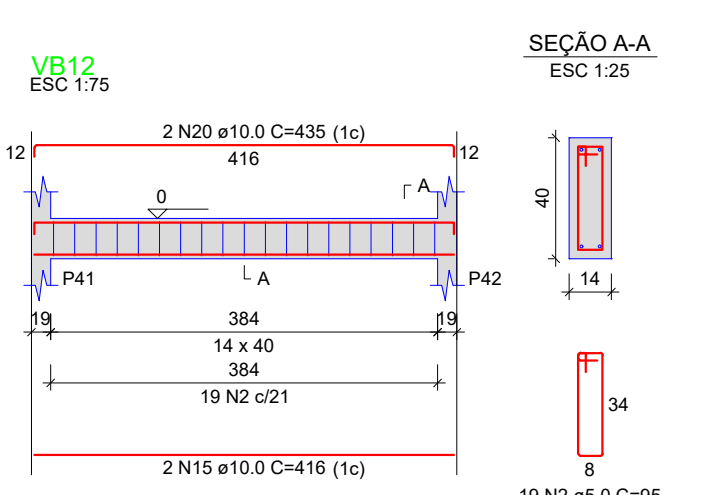
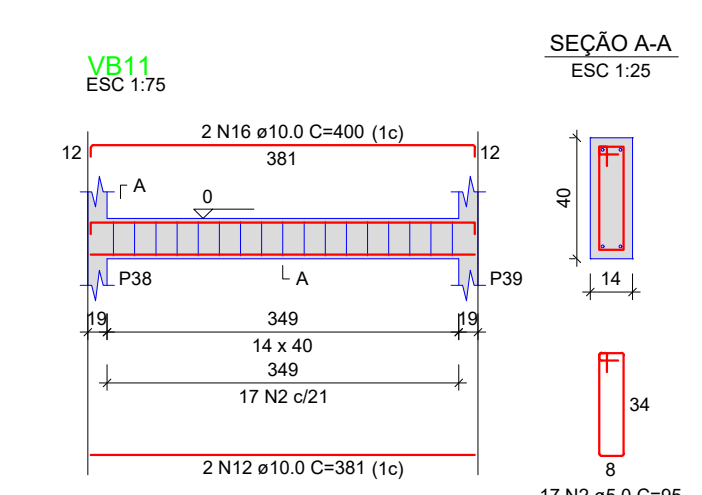
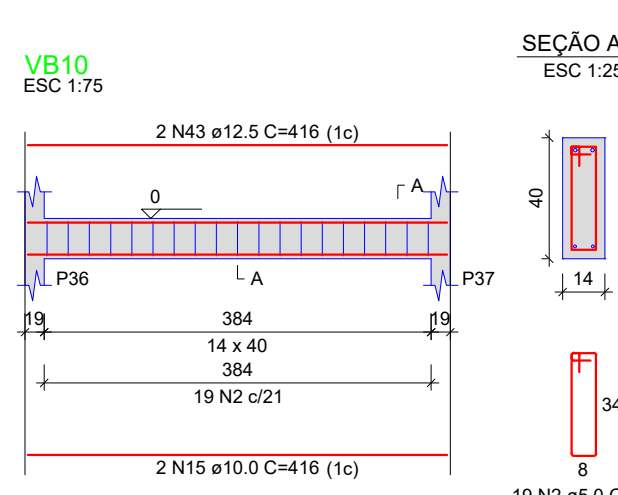
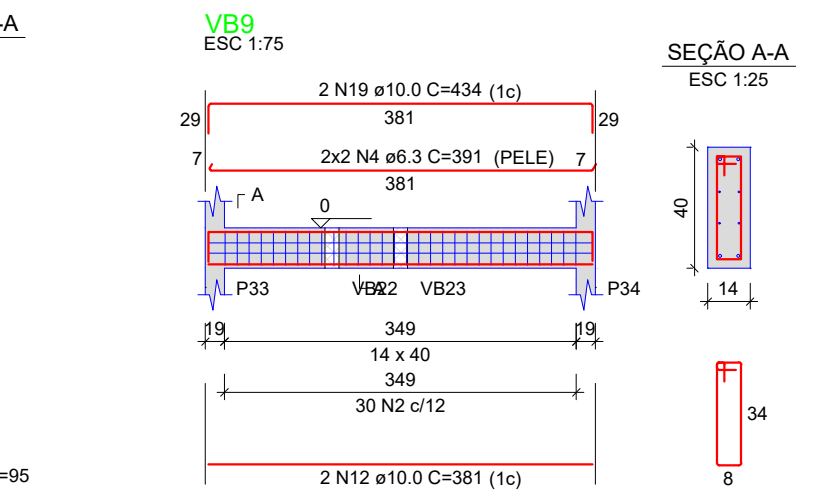
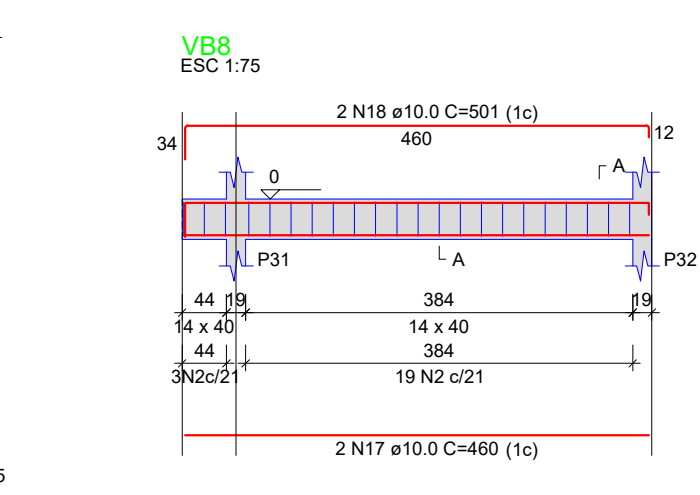
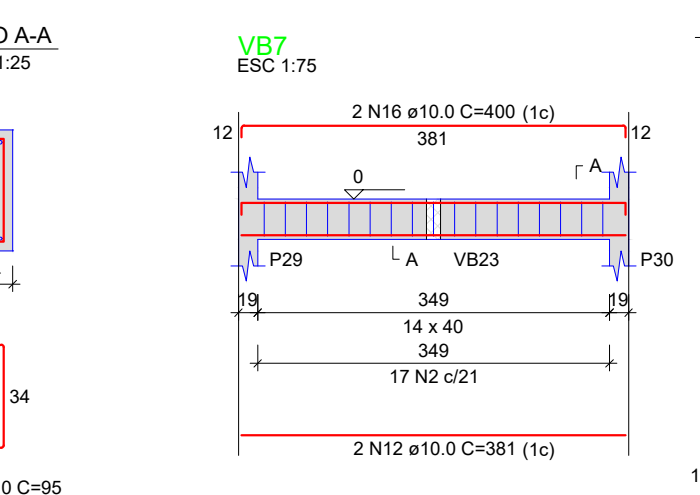
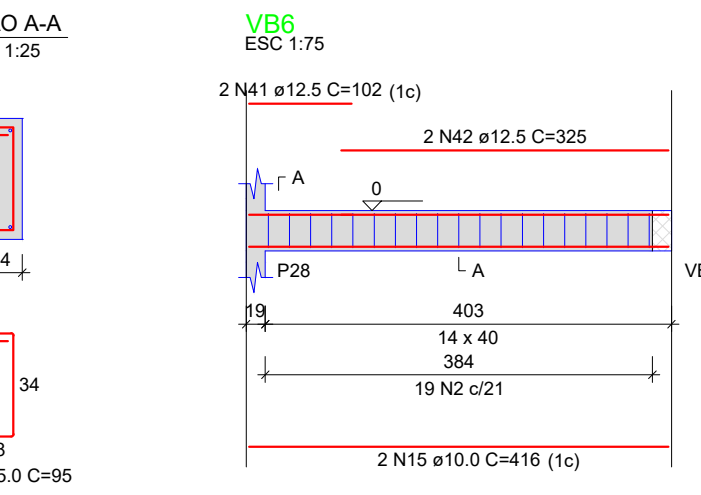
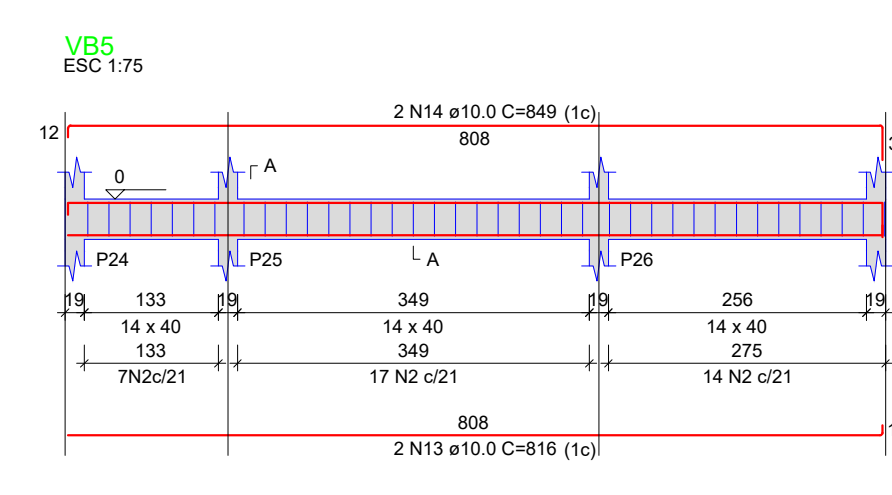
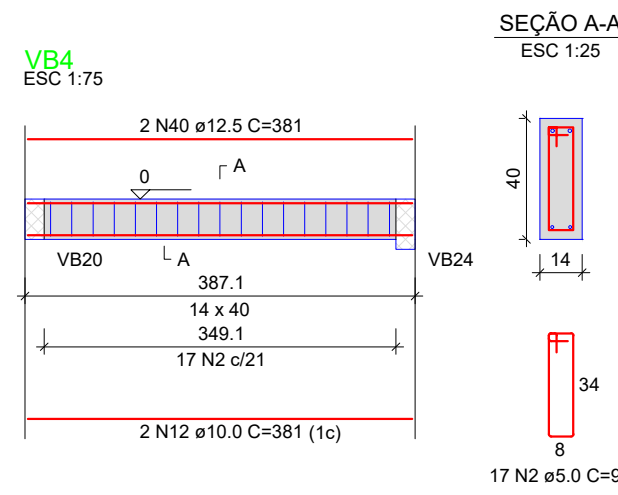


RELAÇÃO DO AÇO

ACO	N	DIAM (mm)	QUANT	C.UNIT (cm)	C.TOTAL (cm)
CA60	1	5.0	480	125	60000
VB4	1	5.0	215	95	20425
VB7	3	5.0	70	105	7350
VB8	4	6.3	4	311	1564
VB10	5	10.0	6	974	5844
VB13	6	10.0	4	313	1252
VB16	7	10.0	10	381	3810
VB19	8	10.0	4	1177	4708
	9	10.0	2	223	446
	10	10.0	2	290	580
	11	10.0	2	223	446
	12	10.0	10	381	3810
	13	10.0	2	816	1632
	14	10.0	2	849	1698
	15	10.0	6	416	2496
	16	10.0	4	400	1600
	17	10.0	2	450	900
	18	10.0	2	501	1002
	19	10.0	2	434	868
	20	10.0	2	435	870
	21	10.0	2	165	330
	22	10.0	2	187	374
	23	10.0	2	439	878
	24	10.0	2	476	952
	25	10.0	2	399	798
	26	10.0	2	418	836
	27	10.0	2	828	1656
	28	10.0	2	896	1792
	29	10.0	2	925	1850
	30	10.0	2	925	1850
	31	10.0	2	1095	2190
	32	10.0	2	879	1758
	33	10.0	2	1199	2398
	34	10.0	4	1200	4800
	35	10.0	2	478	956
	36	10.0	2	800	1600
	37	10.0	2	445	890
	38	12.5	2	1176	2352
	39	12.5	2	245	490
	40	12.5	2	381	762
	41	12.5	4	102	408
	42	12.5	2	325	650
	43	12.5	2	416	832
	44	12.5	2	290	580
	45	12.5	2	1135	2270
	46	12.5	2	215	430

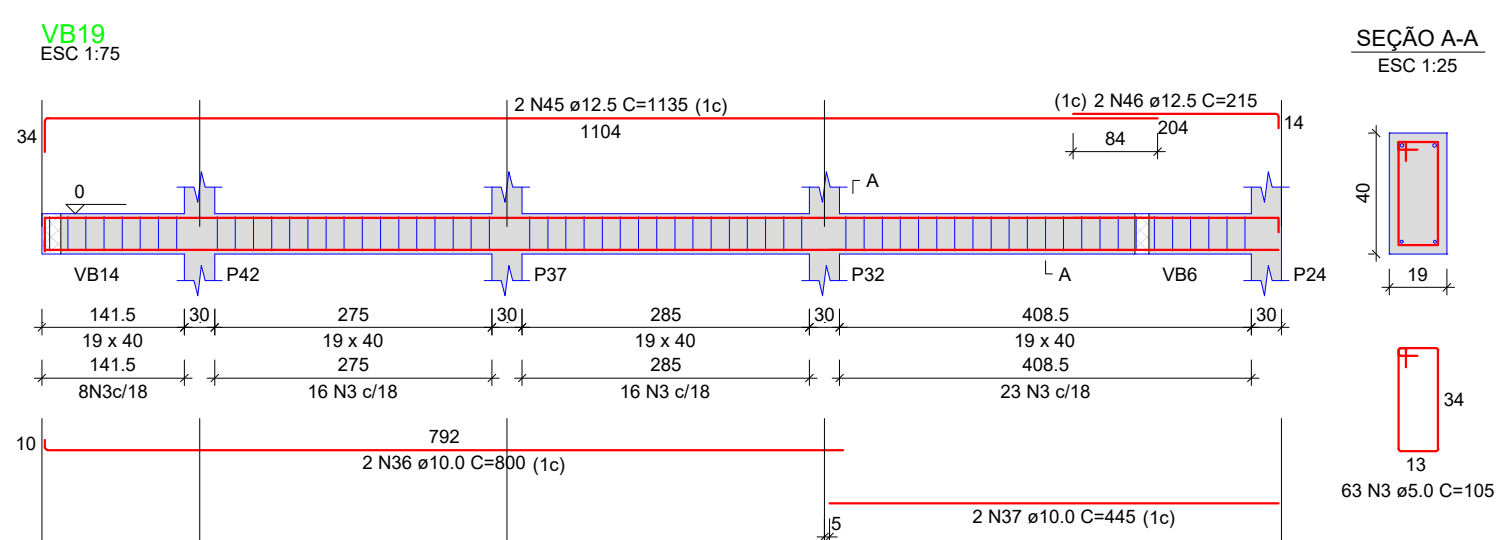
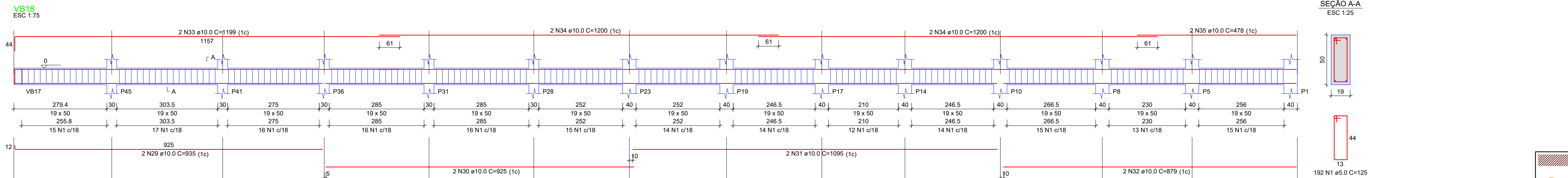
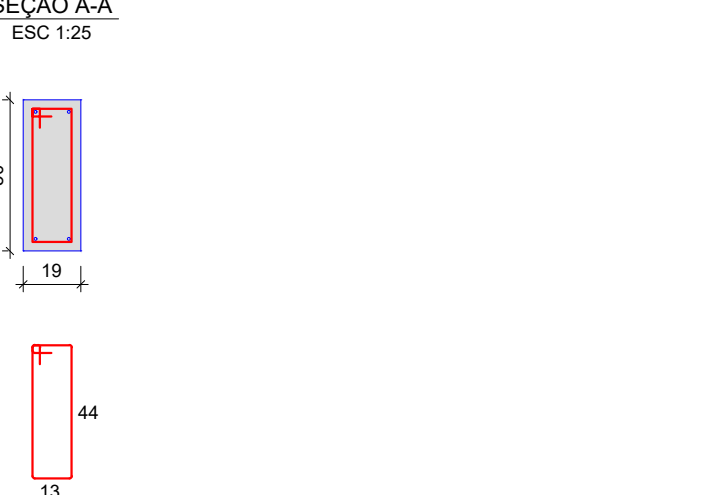
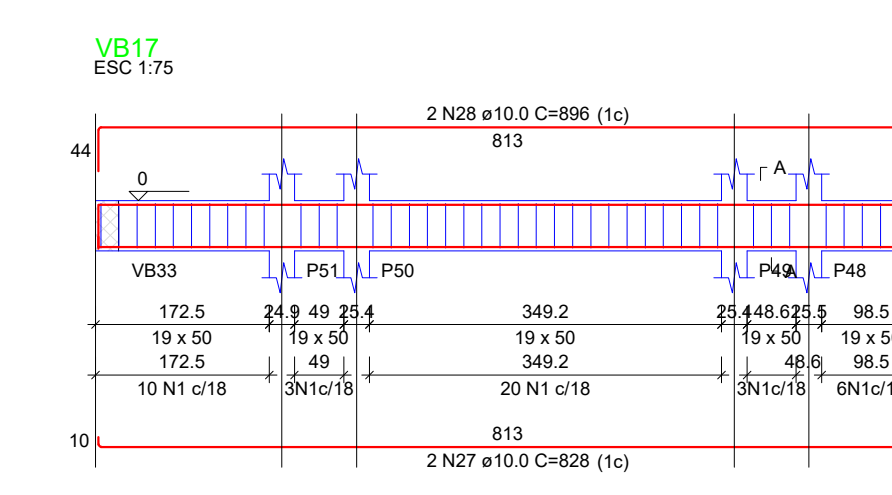
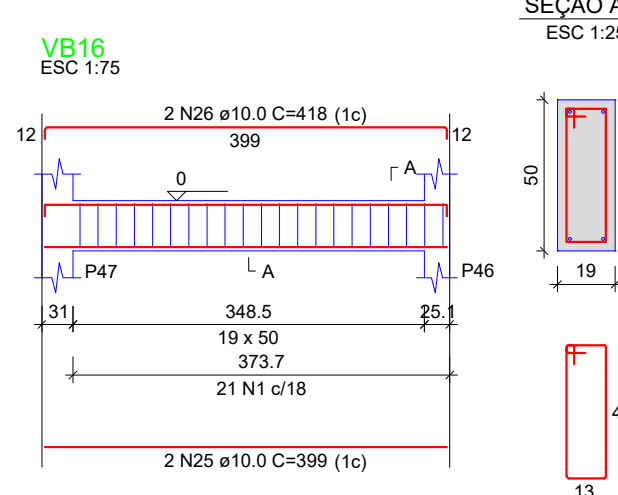


RESUMO DO AÇO

ACO	DIAM (mm)	C.TOTAL (m)	PESO + 0% (kg)
CA50	6.3	15.6	3.8
CA50	10.0	544.8	335.9
CA60	12.5	87.7	84.5
CA60	5.0	877.8	135.3

PESO TOTAL (kg)
CA50 424.2
CA60 135.3

Volume de concreto (C-30) = 12.42 m³
Área de forma = 166.77 m²



PREFEITURA MUNICIPAL DE BADY BASSITT - SP
CNPJ 45.093.267/0001-09

CRS ENGENHARIA

Descrição: **ESTRUTURA DE CONCRETO**
EDIFICAÇÃO: DET. VIGAS BALDRAME 01-05

Folha: **CON 07/31**

Objeto: **CONSTRUÇÃO DE UMA ESCOLA DE ENSINO FUNDAMENTAL I NA ÁREA INSTITUCIONAL DO JARDIM TANGARÁ, EM BADY BASSITT - SP**

Projetista: **PREFEITURA MUNICIPAL DE BADY BASSITT - SP**

Proprietário: **JOSMAR NASCIMENTO RODRIGUES**
ENGENHEIRO CIVIL
CREA 187618-SP

Endereço: **ENTRE RUA 02 E RUA 03, LOTEAMENTO JD. TANGARÁ**

Município: **BADY BASSITT** Estado: **SP**

Matrícula / Transcrição: - Contrato nº: -

Coordenadas Geográficas / SAD69: **20°55'35.8"S 49°27'52.0"W**
PREFEITO MUNICIPAL

Escala: **INDICADAS** Data: **04/11/2021** Data Última Revisão: - ART nº: **2.802.723.021.146.630-9**

LUIZ ANTONIO TOBARINI
PREFEITO MUNICIPAL