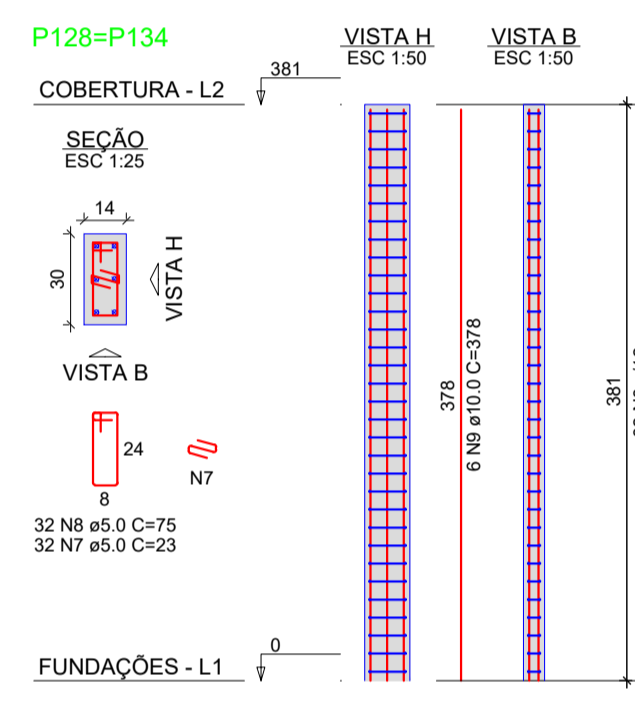
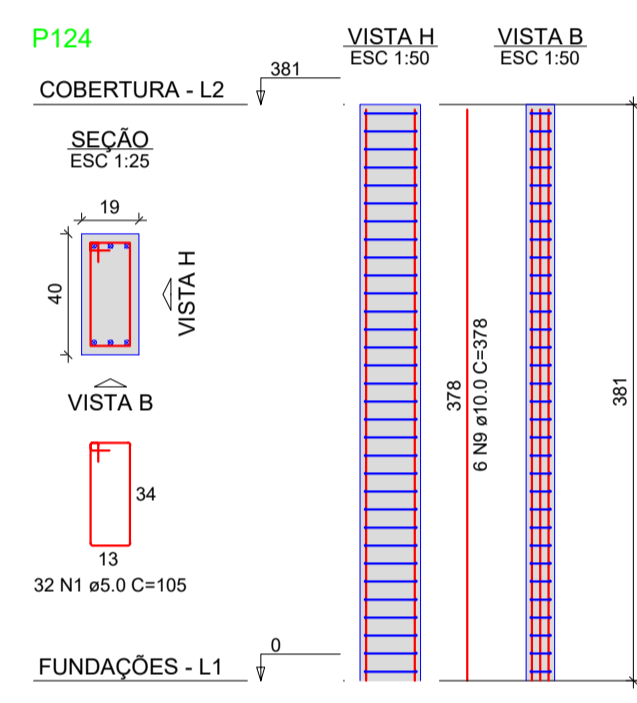
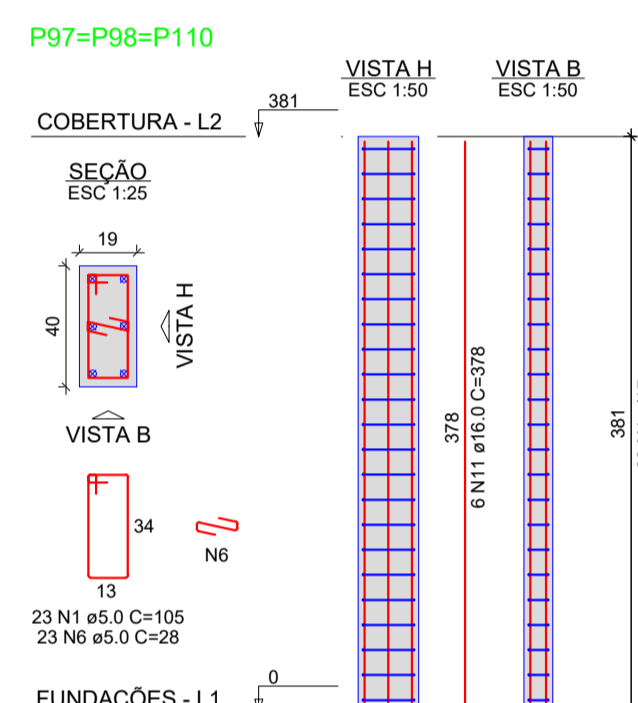
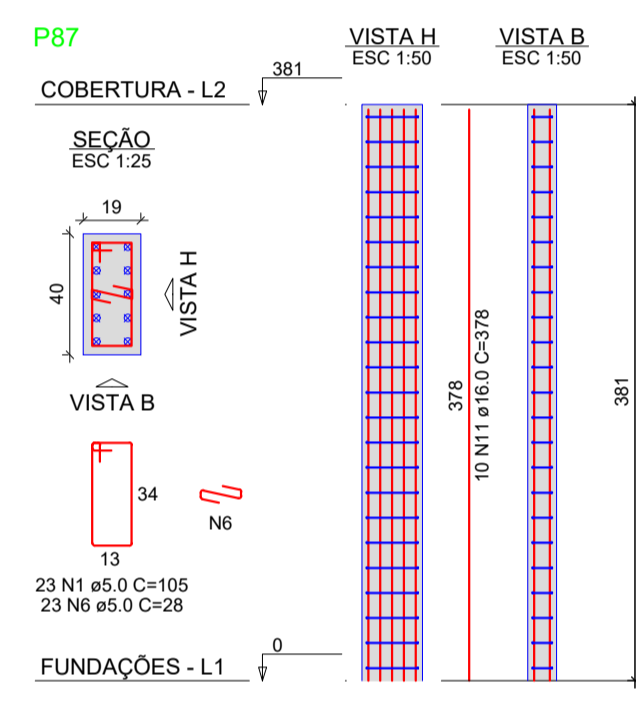
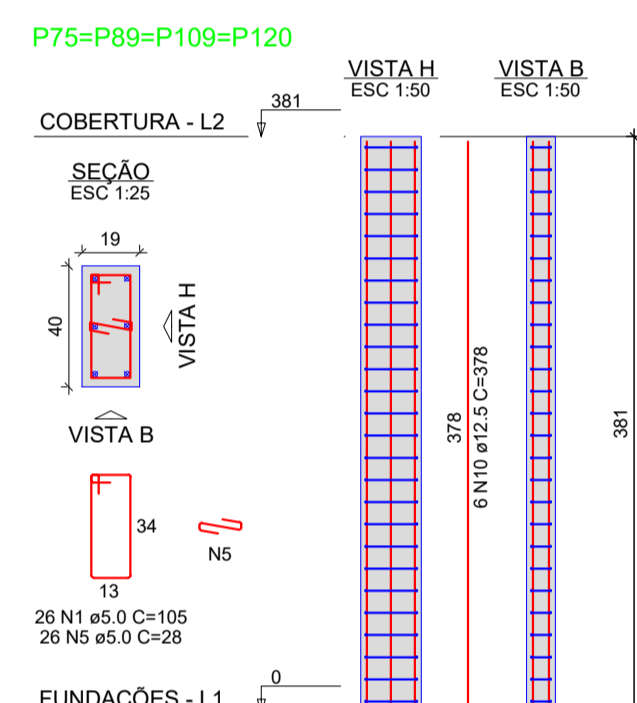
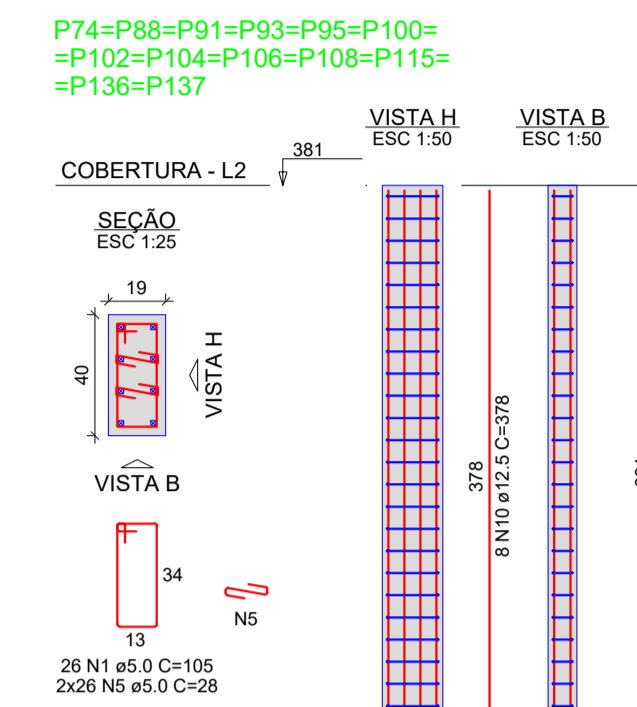
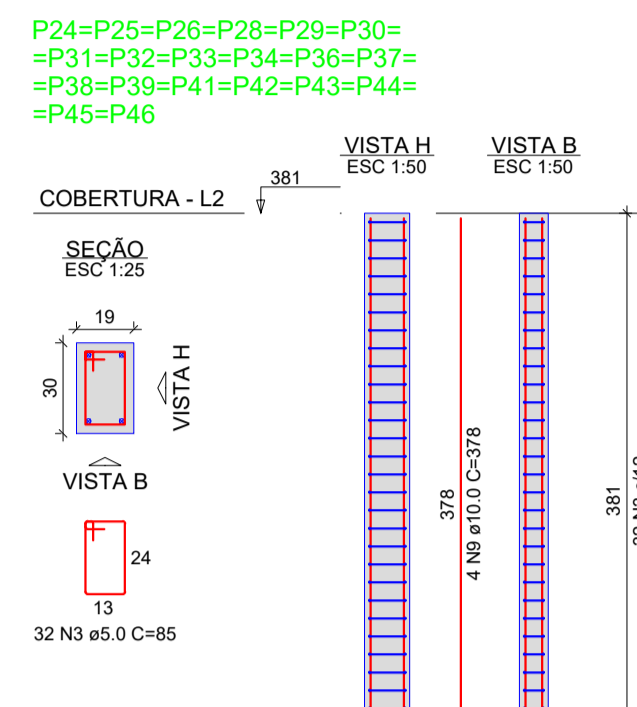
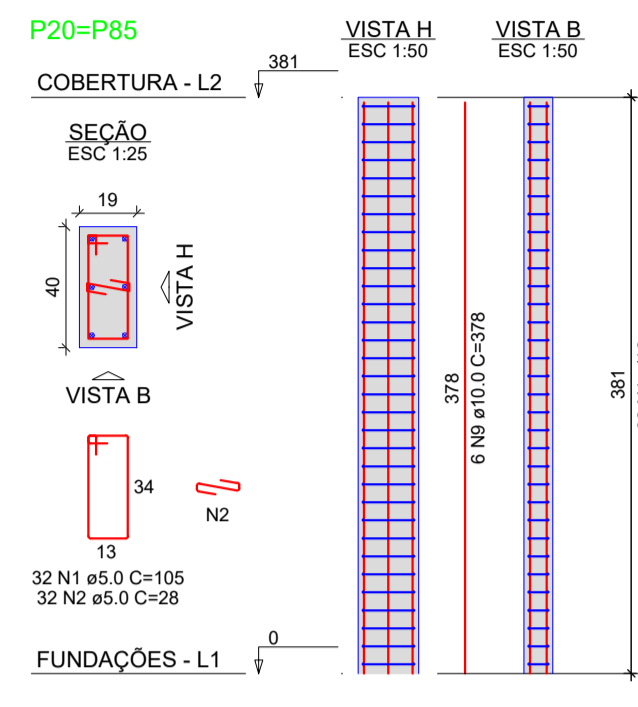
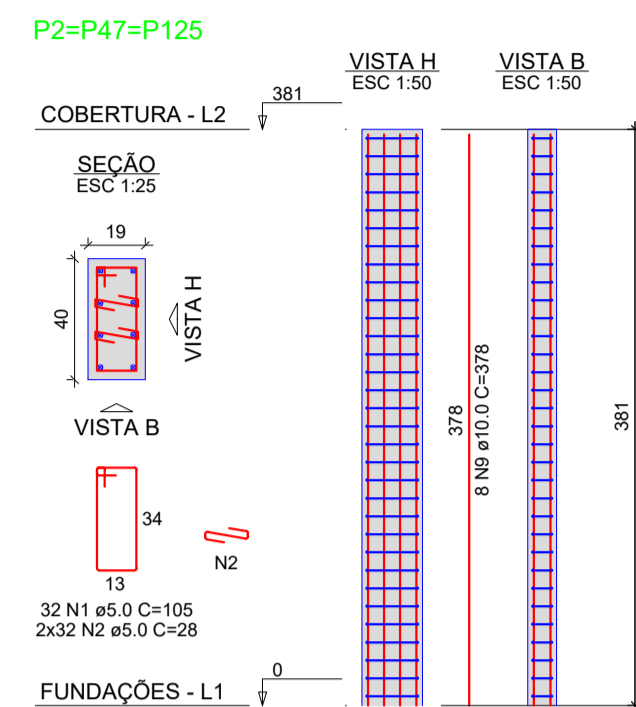
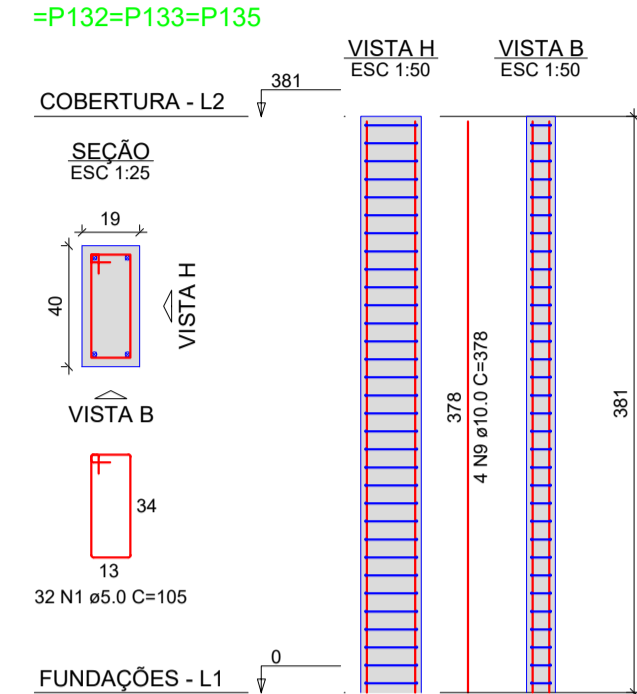


## PILARES ESTRUTURAIS

P1=P3=P4=P5=P6=P7=P8=P9=  
 =P10=P11=P12=P13=P14=P15=  
 =P16=P17=P18=P19=P21=P22=  
 =P23=P27=P35=P40=P52=P53=  
 =P54=P55=P56=P57=P58=P59=  
 =P60=P61=P62=P63=P64=P65=  
 =P66=P67=P68=P69=P70=P71=  
 =P72=P73=P76=P77=P78=P79=  
 =P80=P81=P82=P83=P84=P86=  
 =P90=P92=P94=P96=P99=  
 =P101=P103=P105=P107=  
 =P111=P112=P113=P114=  
 =P116=P117=P118=P119=  
 =P121=P122=P123=P126=  
 =P127=P129=P130=P131=  
 =P132=P133=P135



RELAÇÃO DO AÇO

AÇO	N	DIAM (mm)	QUANT	C.UNIT (cm)	C.TOTAL (cm)
CA60	1	5.0	3414	105	358470
	2	5.0	256	28	7168
	3	5.0	640	85	54400
	4	5.0	128	75	9600
	5	5.0	780	28	21840
	6	5.0	92	28	2576
	7	5.0	64	23	1472
	8	5.0	64	75	4800
	9	10.0	496	378	183708
	10	12.5	128	378	48384
	11	16.0	28	378	10584

RESUMO DO AÇO

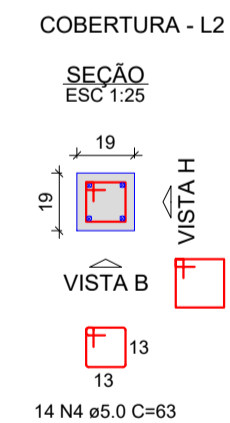
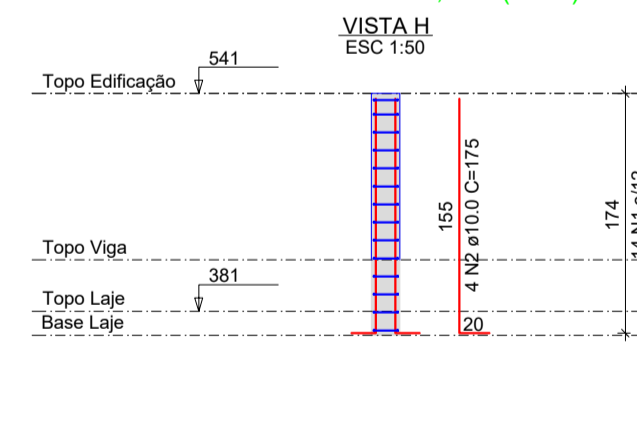
AÇO	DIAM (mm)	C.TOTAL (m)	PESO + 0% (kg)
CA50	10.0	1837.1	1132.6
CA60	12.5	483.8	486.1
CA60	16.0	105.8	167.1
CA60	5.0	4603.3	709.5

PESO TOTAL (kg)  
 CA50 1765.8  
 CA60 709.5

Volume de concreto (C-30) = 37.54 m³  
 Área de forma = 593.83 m²

## PILARES ESTRUTURAIS PLATIBANDA

PILARES PLATIBANDA A CADA 2,50M (132X)



RELAÇÃO DO AÇO

PILARES PLATIBANDA

AÇO	N	DIAM (mm)	QUANT	C.UNIT (cm)	C.TOTAL (cm)
CA60	1	5.0	1848	63	116424
CA50	2	5.0	528	175	92400

RESUMO DO AÇO

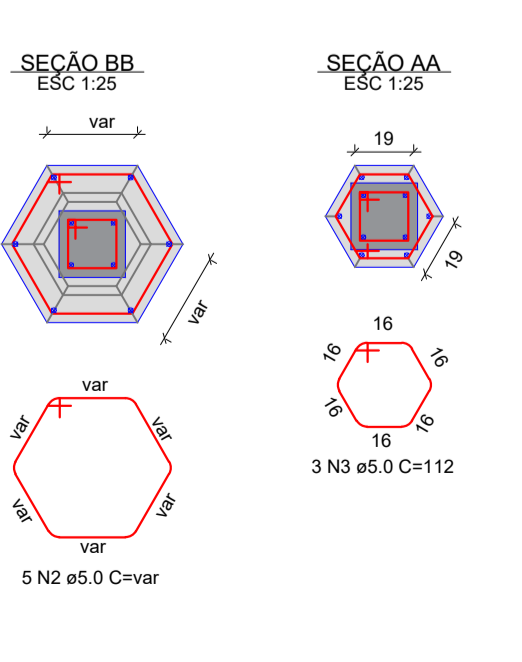
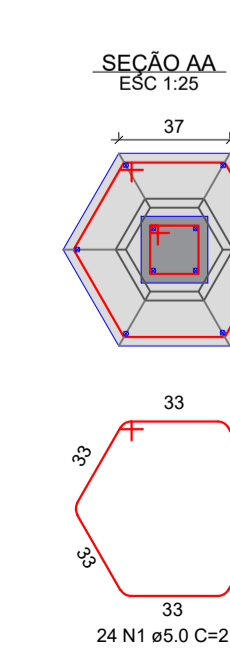
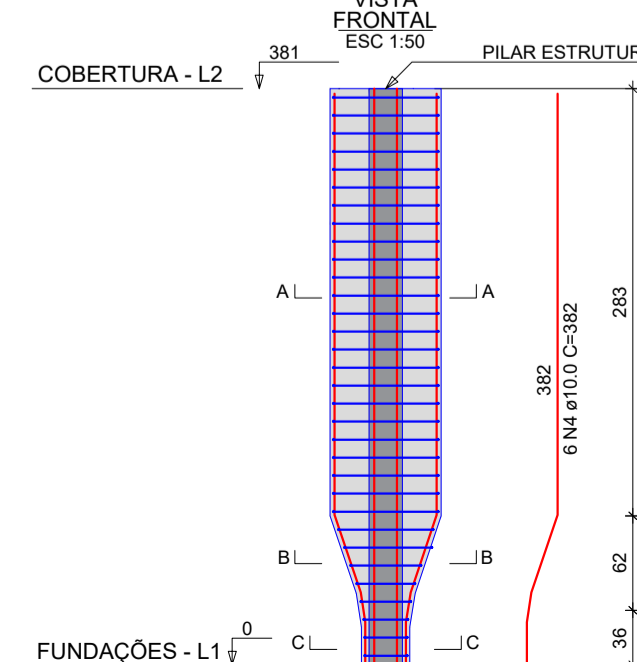
AÇO	DIAM (mm)	C.TOTAL (m)	PESO + 0% (kg)
CA50	10.0	924.0	570.1
CA60	5.0	1164.2	179.3

PESO TOTAL (kg)  
 CA50 570.1  
 CA60 179.3

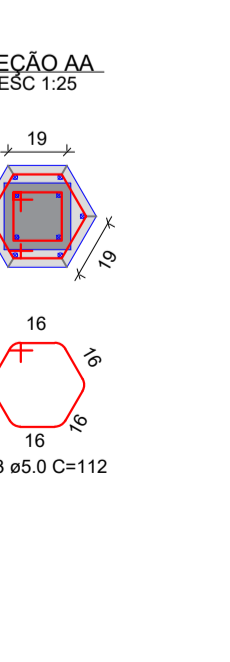
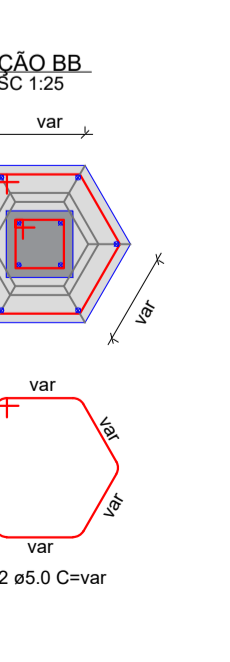
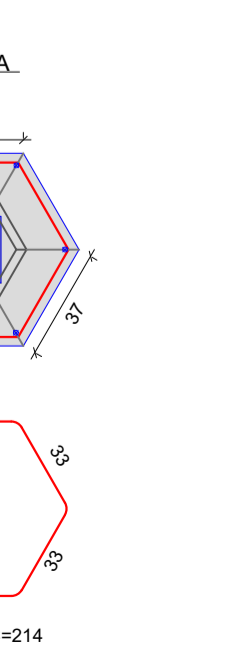
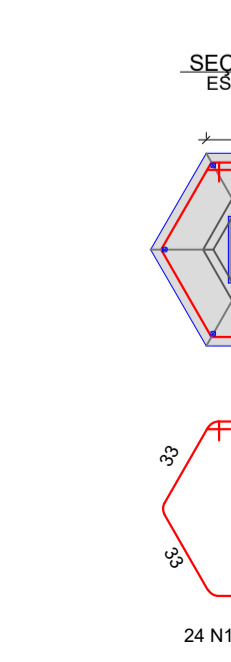
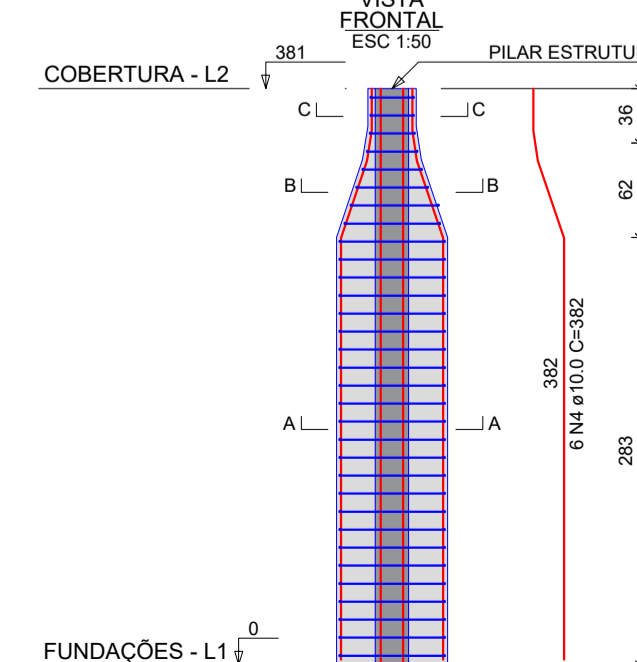
Volume de concreto (C-30) = 5.24 m³  
 Área de forma = 110.35 m²

## PILARES ARQUITETÔNICOS

P48=P50



P49=P51



RELAÇÃO DO AÇO

AÇO	N	DIAM (mm)	QUANT	C.UNIT (cm)	C.TOTAL (cm)
CA60	1	5.0	96	214	20544
	2	5.0	20	20	3260
	3	5.0	12	112	1344
CA50	9	10.0	24	382	9168

RESUMO DO AÇO

AÇO	DIAM (mm)	C.TOTAL (m)	PESO + 0% (kg)
CA50	10.0	91.7	56.6
CA60	5.0	251.5	38.7

PESO TOTAL (kg)  
 CA50 56.6  
 CA60 38.7

Volume de concreto (C-30) = 4.60 m³  
 Área de forma = 33.68 m²

PREFETURA MUNICIPAL DE BADY BASSITT - SP  
 CNPJ 45.093.267/0001-09

CRS ENGENHARIA

Descrição: **ESTRUTURA DE CONCRETO**  
 EDIFICAÇÃO: DET. PILARES 02-02

Folha: **CON 06/31**

Objeto: CONSTRUÇÃO DE UMA ESCOLA DE ENSINO FUNDAMENTAL I NA ÁREA INSTITUCIONAL DO JARDIM TANGARÁ, EM BADY BASSITT - SP

Projetista: JOSMAR NASCIMENTO RODRIGUES  
 ENGENHEIRO CIVIL  
 CREA 187618-MG-SP

Proprietário: LUIZ ANTONIO TOBARINI  
 PREFEITO MUNICIPAL

Endereço: ENTRE RUA 02 E RUA 03, LOTEAMENTO JD. TANGARÁ

Município: BADY BASSITT Estado: SP

Matrícula / Transcrição: - Contrato nº: -

Coordenadas Geográficas / SAD69:  
 20°55'35.8"S 49°27'52.0"W

Escala: ÍNDICADAS Data: 04/11/2021 Data Última Revisão: - ART nº: 2.802.723.021.146.630-9