

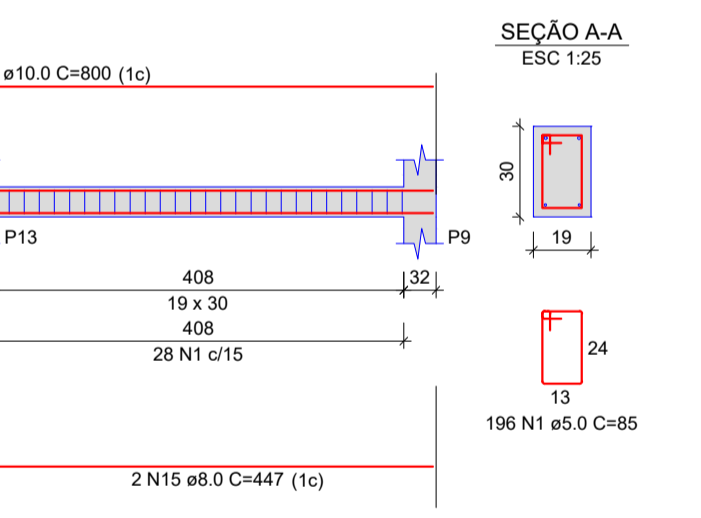
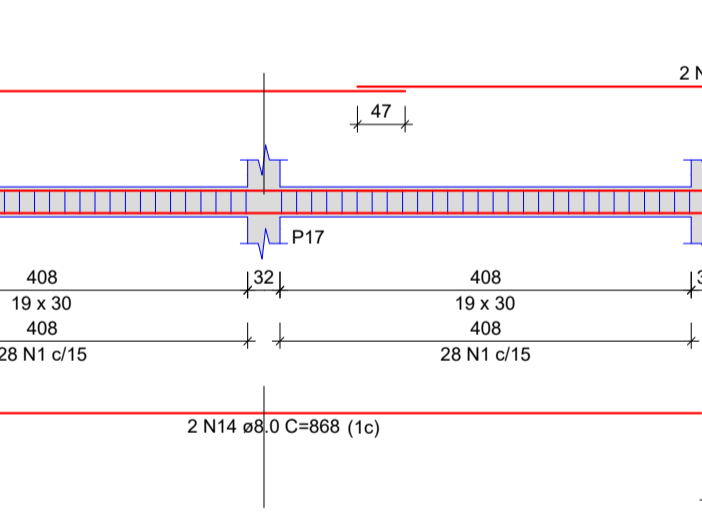
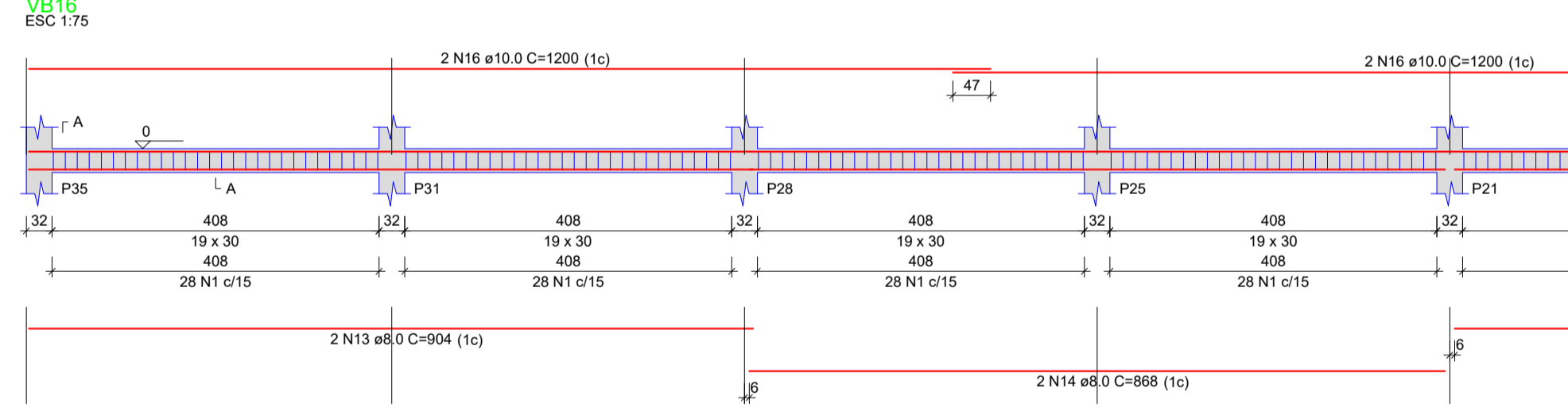
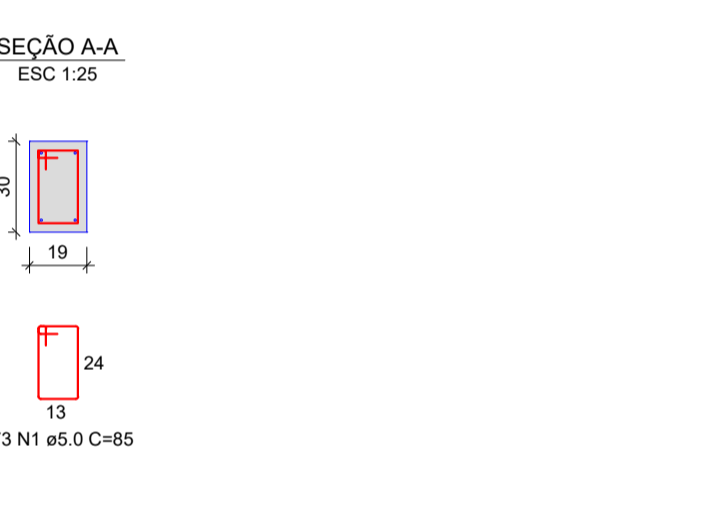
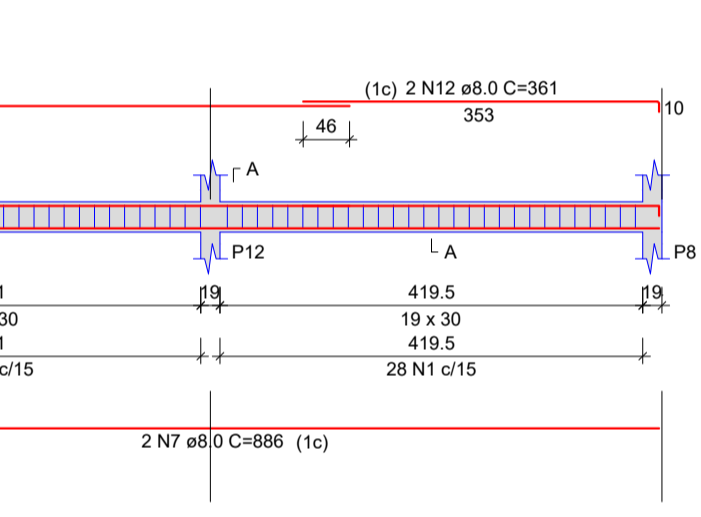
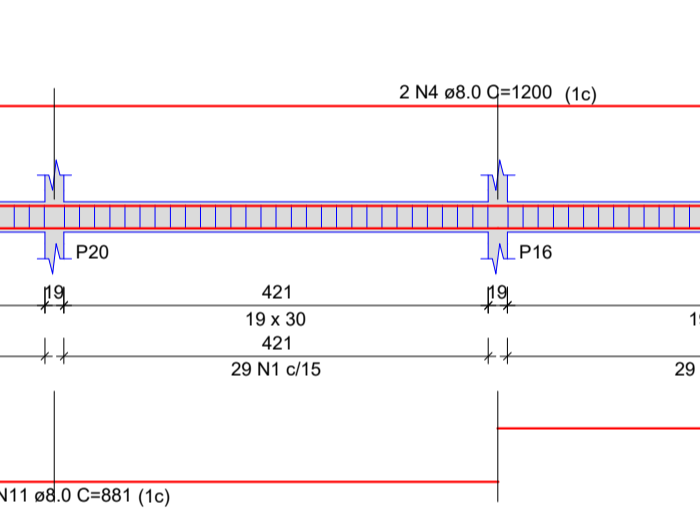
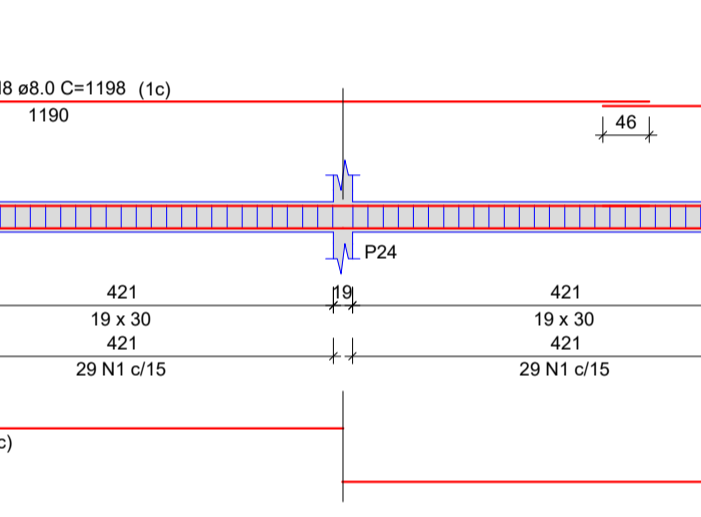
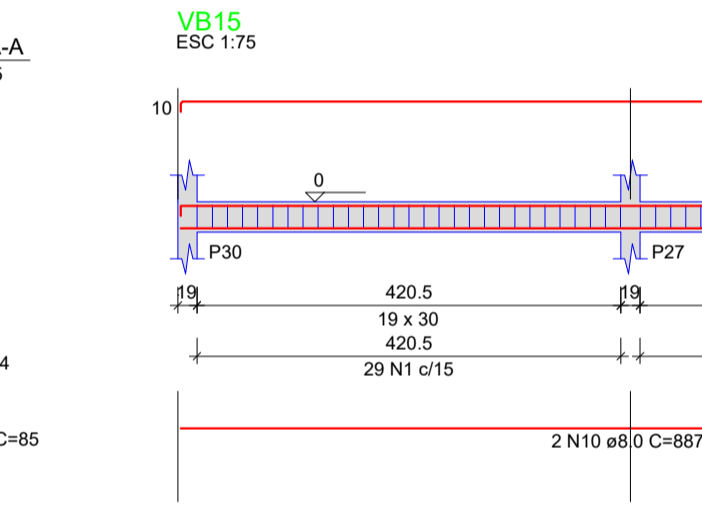
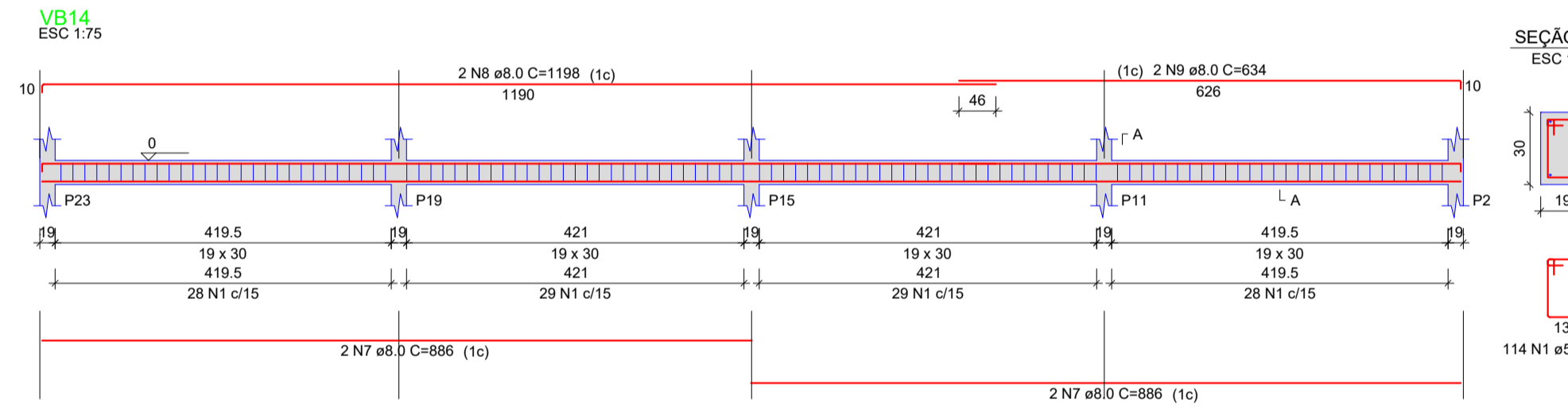
RELAÇÃO DO AÇO

ACAO	N	DIAM (mm)	QUANT	C.UNIT (cm)	C.TOTAL (cm)
CA50	1	5.0	984	85	83640
CA50	2	6.3	150	86	12900
CA50	3	8.0	4	866	3464
CA50	4	8.0	4	1200	4800
CA50	5	8.0	2	744	1488
CA50	6	8.0	40	151	6040
CA50	7	8.0	6	886	5316
CA50	8	8.0	4	1198	4792
CA50	9	8.0	2	634	1268
CA50	10	8.0	2	887	1774
CA50	11	8.0	2	881	1762
CA50	12	8.0	2	361	722
CA50	13	8.0	2	304	608
CA50	14	8.0	2	868	3472
CA50	15	8.0	2	447	894
CA50	16	10.0	4	1200	4800
CA50	17	10.0	2	800	1600
CA50	18	12.5	4	893	3572
CA50	19	12.5	2	698	1396
CA50	20	12.5	4	1200	4800
CA50	21	12.5	2	782	1564
CA50	22	12.5	2	935	1870
CA50	23	12.5	2	847	1694
CA50	24	12.5	2	873	1746
CA50	25	12.5	2	450	900
CA50	26	12.5	1	190	190
CA50	27	12.5	2	1197	2394
CA50	28	12.5	2	916	1832

RESUMO DO AÇO

ACAO	DIAM (mm)	C.TOTAL (m)	PESO + 0% (kg)
CA50	6.3	129	31.6
CA50	8.0	380	149.9
CA50	10.0	64	39.5
CA50	12.5	213.2	205.4
CA50	5.0	836.4	128.9
PESO TOTAL (kg)			
CA50		426.3	
CA60		128.9	

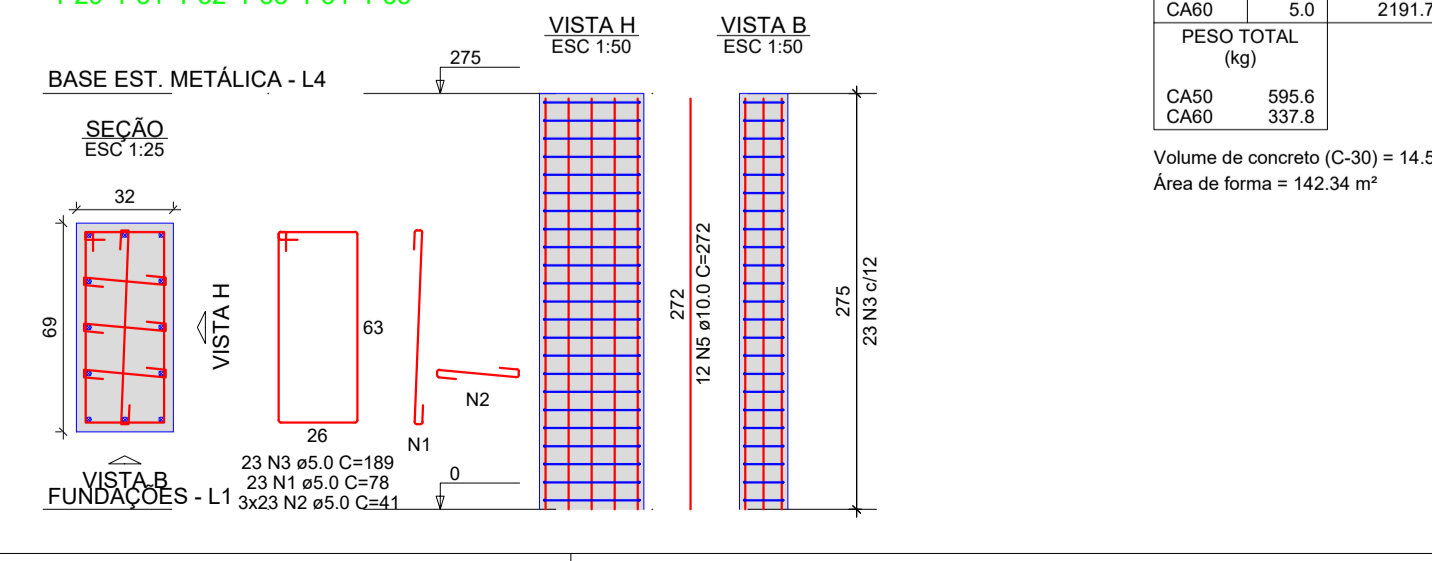
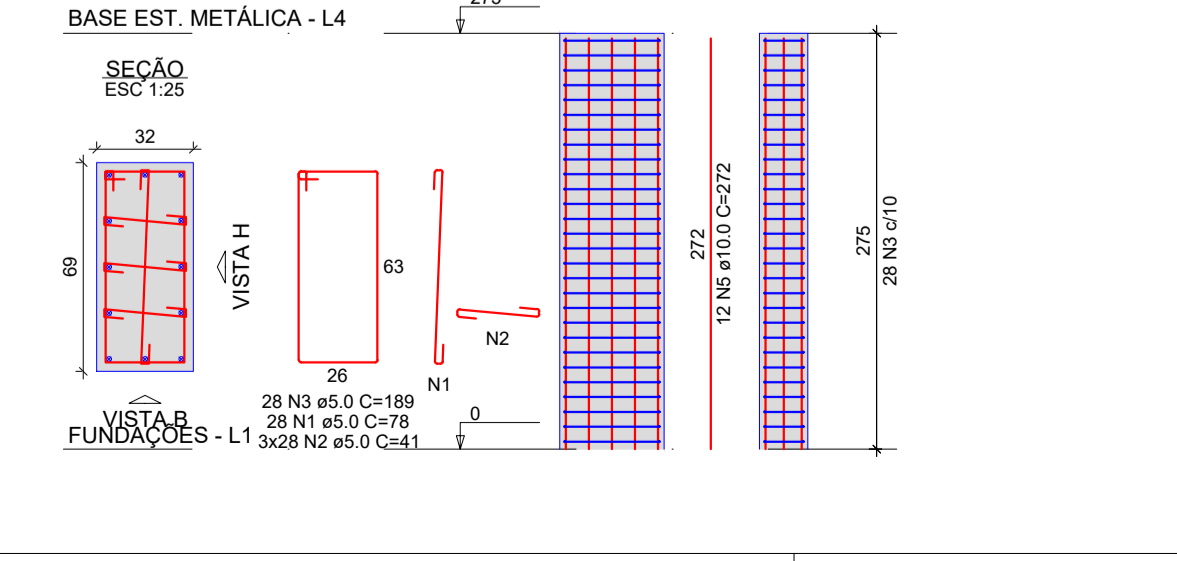
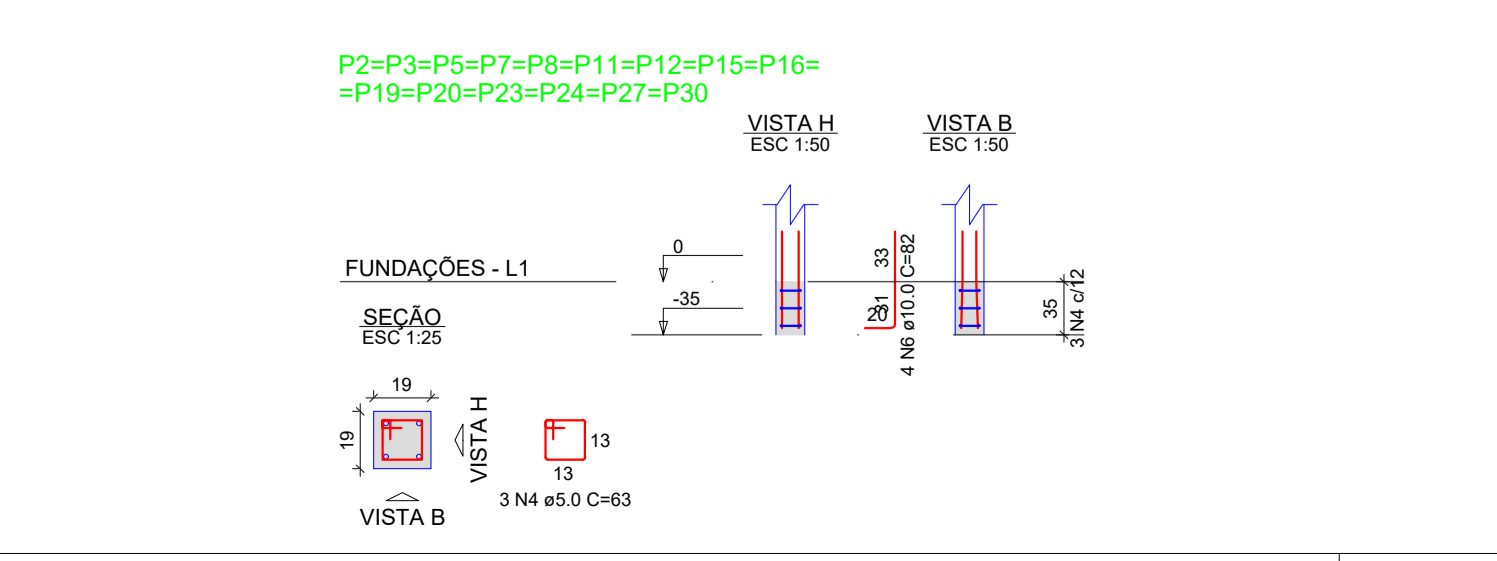
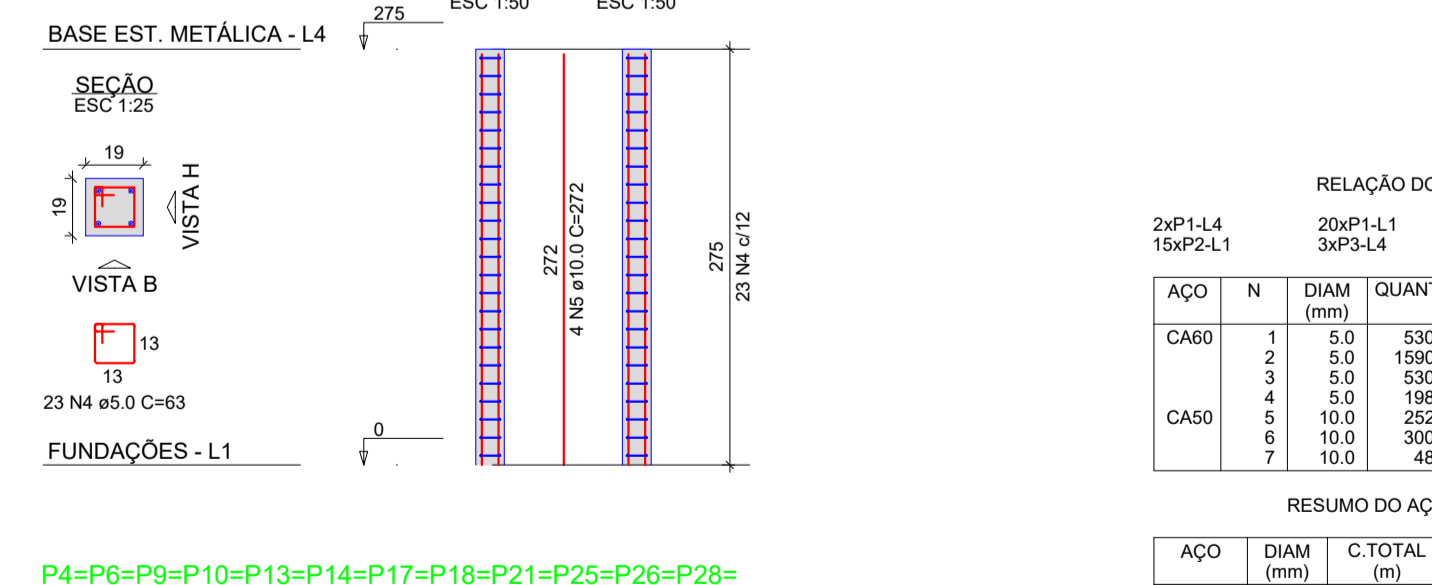
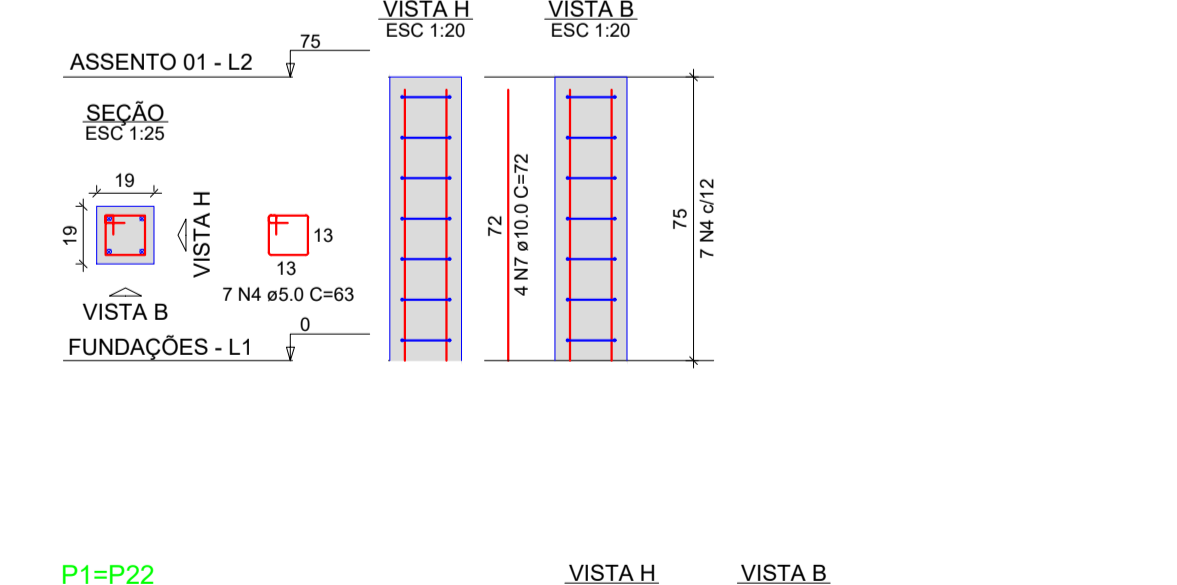
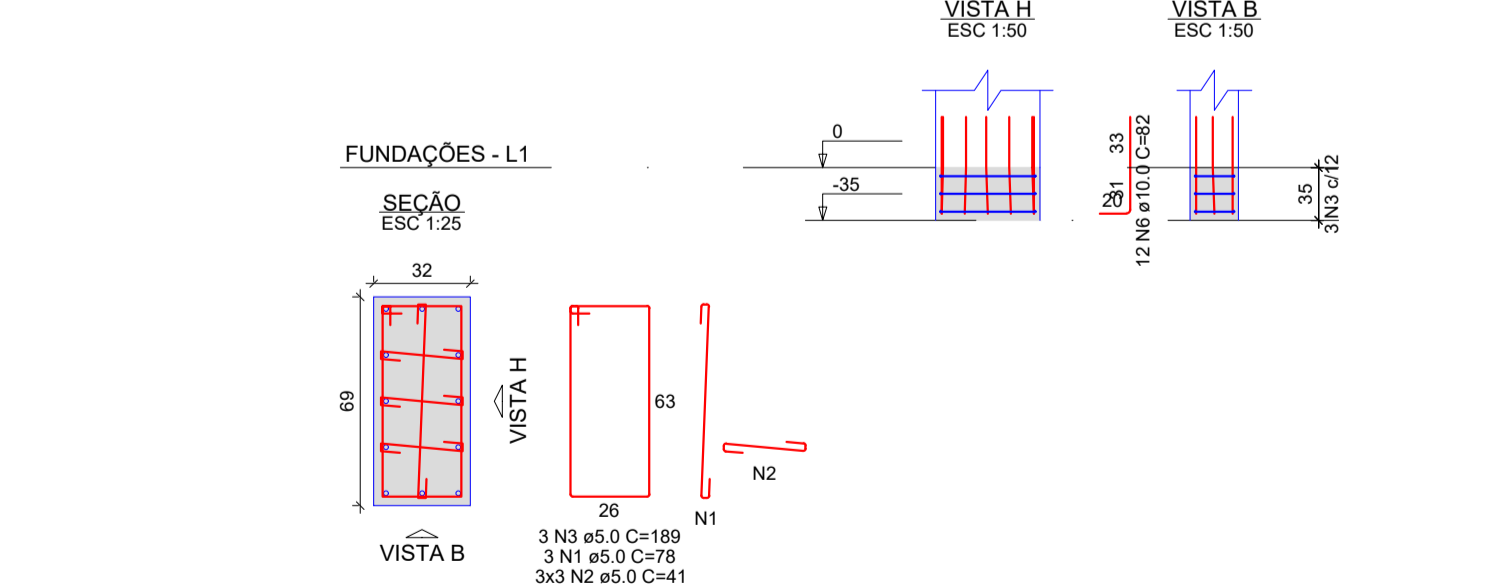
Volume de concreto (C-30) = 9.09 m³
Área de forma = 126.04 m²



P1=P4=P6=P9=P10=P13=P14=P17=P18=P21=P22=
=P25=P26=P28=P29=P31=P32=P33=P34=P35

P2=P8=P11=P12=P15=P16=P19=P20=
=P23=P24=P27=P30

P3=P5=P7



RELAÇÃO DO AÇO

ACAO	N	DIAM (mm)	QUANT	C.UNIT (cm)	C.TOTAL (cm)
CA60	1	5.0	530	78	41340
CA60	2	5.0	1590	41	65190
CA60	3	5.0	530	188	100170
CA50	4	5.0	198	63	12474
CA50	6	10.0	252	272	68544
CA50	6	10.0	300	82	24600
CA50	7	10.0	48	72	3456

RESUMO DO AÇO

ACAO	DIAM (mm)	C.TOTAL (m)	PESO + 0% (kg)
CA50	10.0	966	595.6
CA60	5.0	2191.7	337.8
PESO TOTAL (kg)			
CA50		595.6	
CA60		337.8	

Volume de concreto (C-30) = 14.50 m³
Área de forma = 142.34 m²

BADY BASSITT PREFEITURA MUNICIPAL DE BADY BASSITT - SP
CNPJ 45.093.267/0001-09

CRS ENGENHARIA

Objeto: **ESTRUTURA DE CONCRETO QUADRA: DET. VIGAS BALDRAME E PILARES**

Projeto: **CONSTRUÇÃO DE UMA ESCOLA DE ENSINO FUNDAMENTAL I NA ÁREA INSTITUCIONAL DO JARDIM TANGARÁ, EM BADY BASSITT - SP**

Proprietário: **BADY BASSITT**

Localização: **ENTRE RUA 02 E RUA 03, LOTEAMENTO JD. TANGARÁ**

Estado: **SP**

Coordenadas Geográficas / SAD69: **20°55'35.8"S 49°27'52.0"W**

Escala: **INDICADAS** Data: **04/11/2021** Data Última Revisão: **-** ART N°: **2.802.723.021.146.630-9**