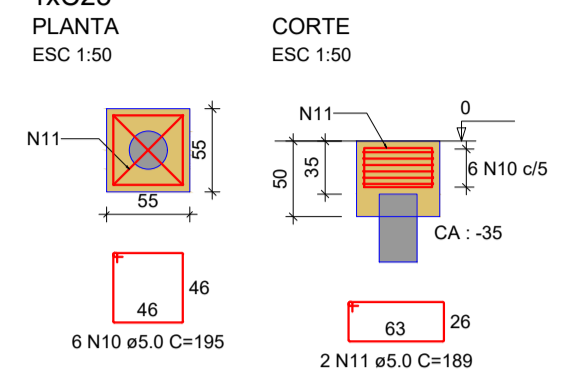
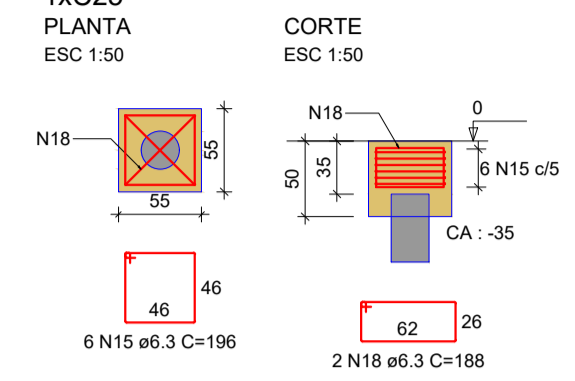


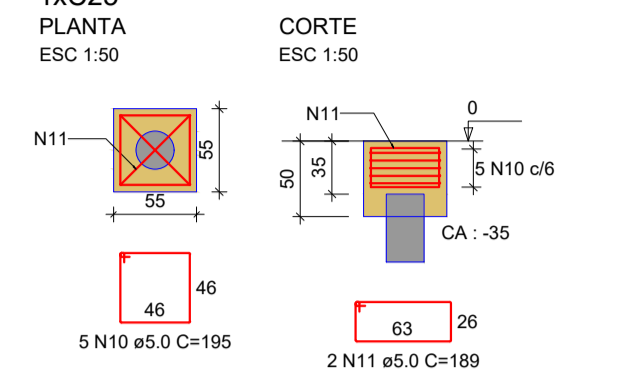
**B1=B3=B5=B6=B8=B9=B14=B15=B17=B23=B37**  
**1x2C25**  
 PLANTA  
 ESC 1:50



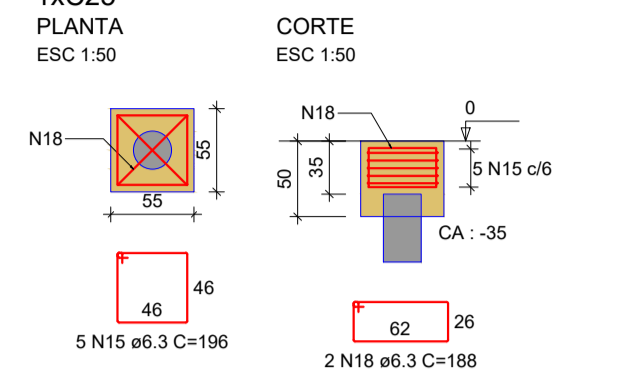
**B2=B21=B67=B69=B71=B73=B76=B78=B80=B82**  
**=B84=B85=B90=B92=B94=B101=B103=B105=B107**  
**1x2C25**  
 PLANTA  
 ESC 1:50



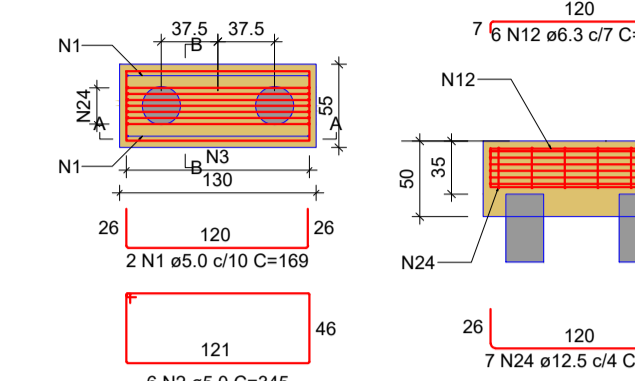
**B4=B7=B13=B16=B18=B22=B24=B27=B29=B30**  
**=B33=B35=B40=B43=B48=B49=B50=B51=B52**  
**=B53=B54=B55=B56=B57=B58=B59=B60=B61**  
**=B62=B63=B113=B118=B123=B129=B131=B133**  
**1x2C25**  
 PLANTA  
 ESC 1:50



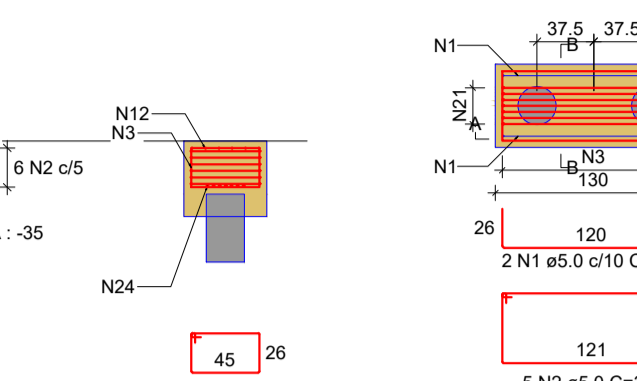
**B10=B12=B19=B26=B28=B31=B32=B34=B36=B38**  
**1x2C25**  
 PLANTA  
 ESC 1:50



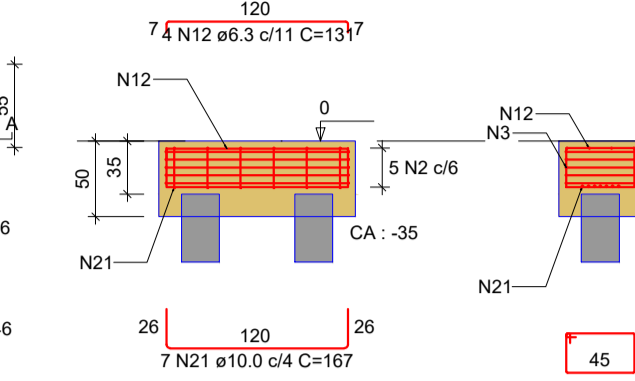
**B11=B66**  
**2x2C25**  
 PLANTA  
 ESC 1:50



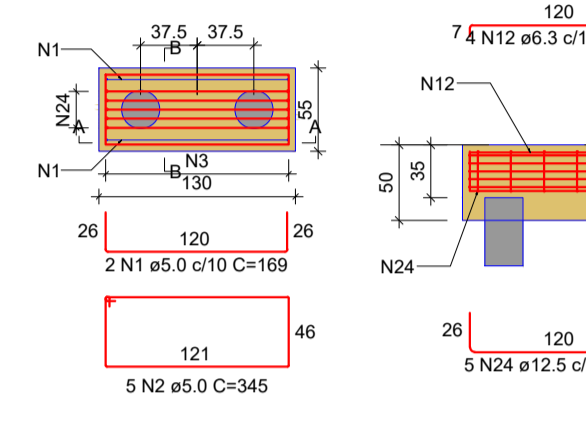
**B20=B47**  
**2x2C25**  
 PLANTA  
 ESC 1:50



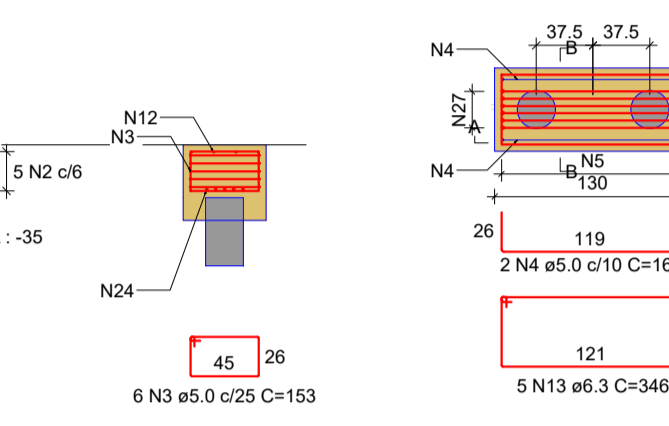
**B25=B64=B86**  
**2x2C25**  
 PLANTA  
 ESC 1:50



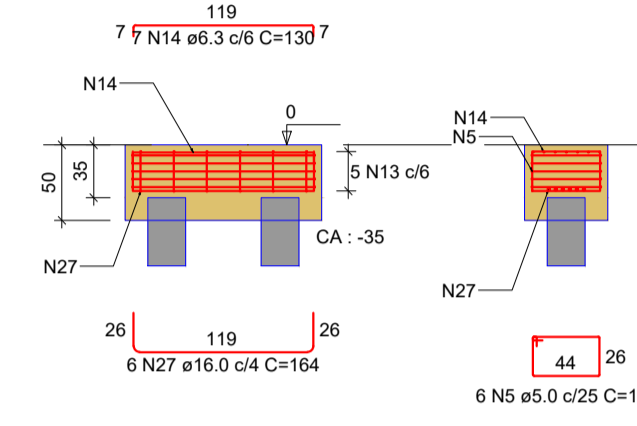
**B25=B64=B86**  
**2x2C25**  
 PLANTA  
 ESC 1:50



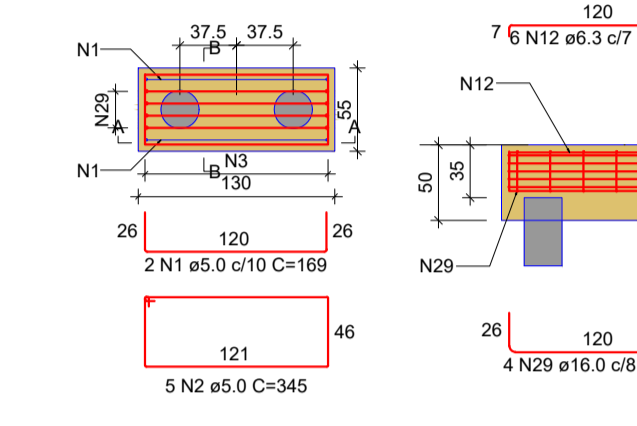
**B65**  
**2x2C25**  
 PLANTA  
 ESC 1:50



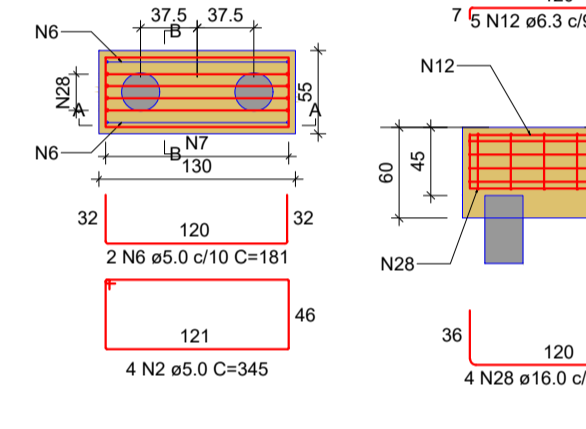
**B68=B70=B114**  
**2x2C25**  
 PLANTA  
 ESC 1:50



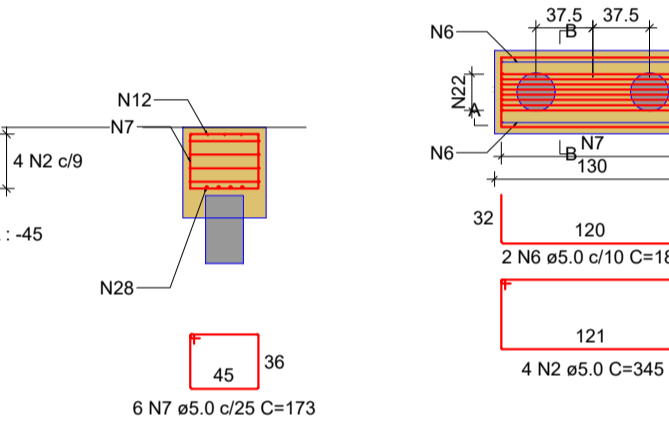
**B72=B77=B79=B81=B83=B124**  
**2x2C25**  
 PLANTA  
 ESC 1:50



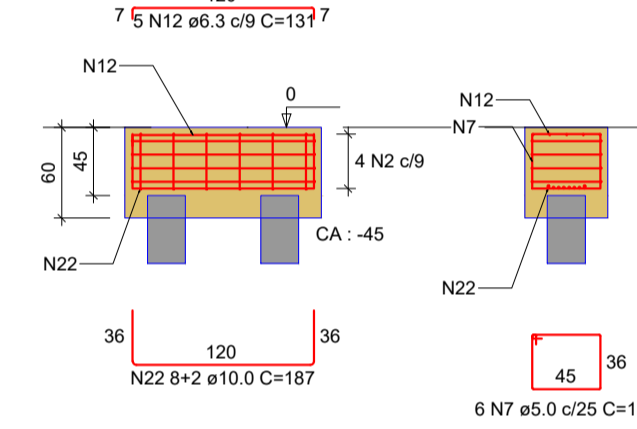
**B74**  
**2x2C25**  
 PLANTA  
 ESC 1:50



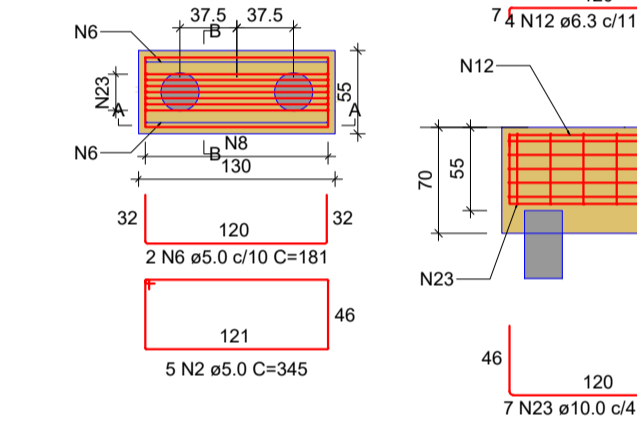
**B75**  
**2x2C25**  
 PLANTA  
 ESC 1:50



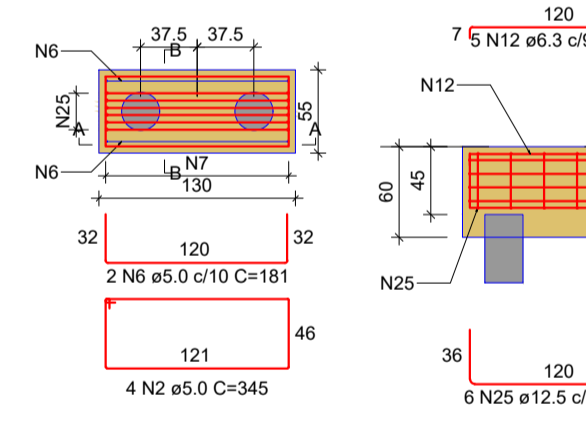
**B77**  
**2x2C25**  
 PLANTA  
 ESC 1:50



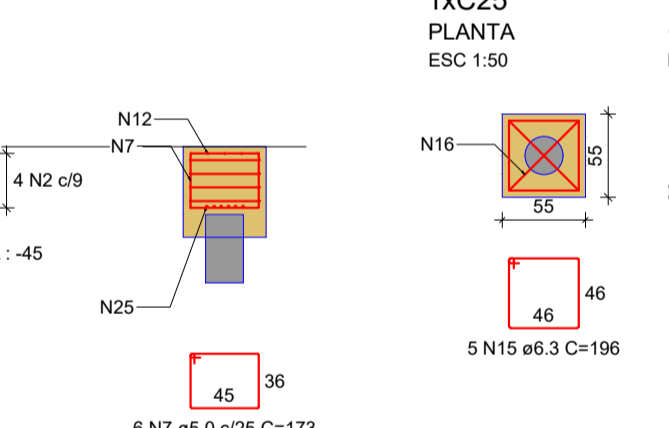
**B78**  
**2x2C25**  
 PLANTA  
 ESC 1:50



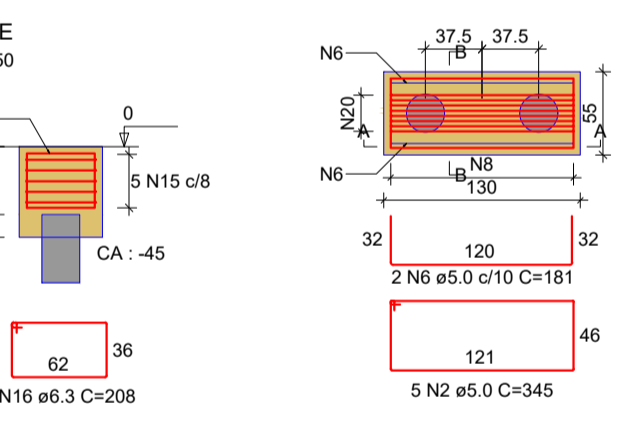
**B89**  
**2x2C25**  
 PLANTA  
 ESC 1:50



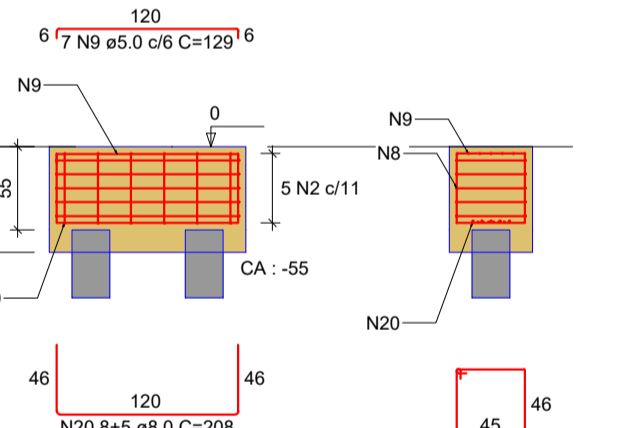
**B91=B93=B95=B100=B102=B104=B106**  
**1x2C25**  
 PLANTA  
 ESC 1:50



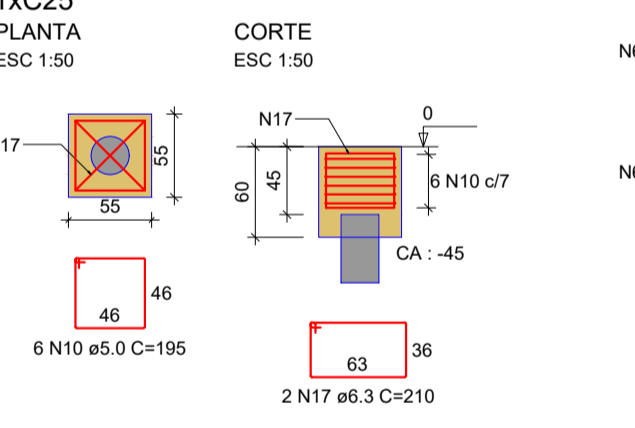
**B97=B98**  
**2x2C25**  
 PLANTA  
 ESC 1:50



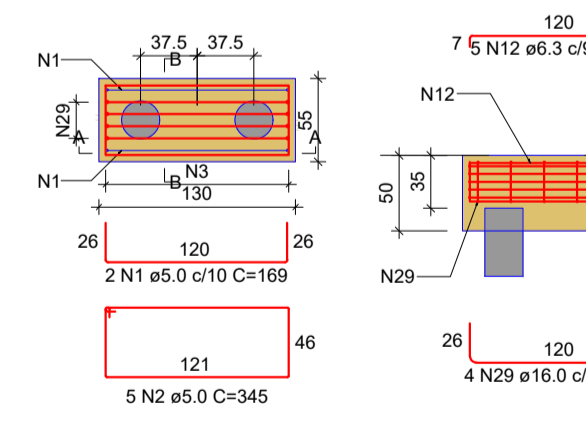
**B108**  
**1x2C25**  
 PLANTA  
 ESC 1:50



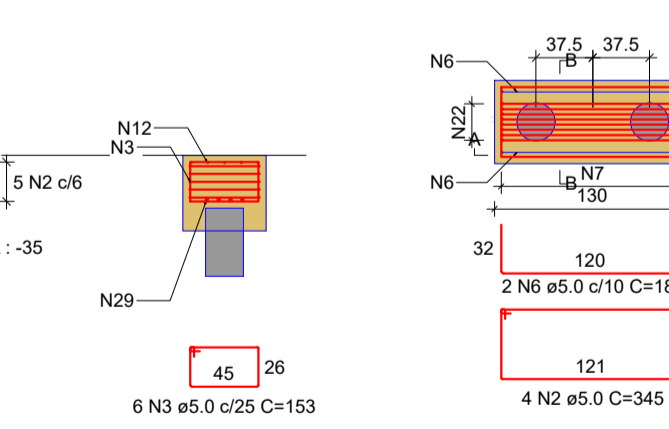
**B110**  
**2x2C25**  
 PLANTA  
 ESC 1:50



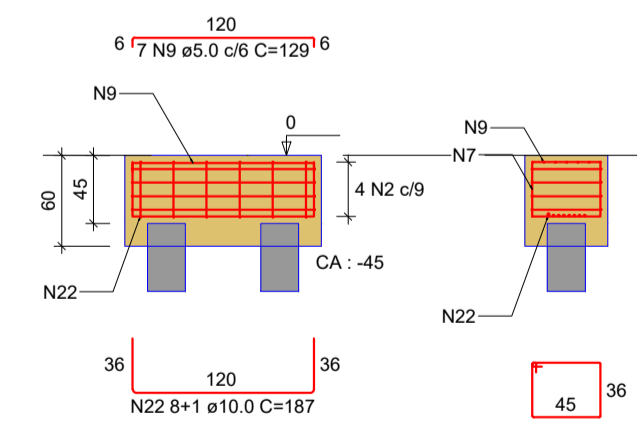
**B119=B125**  
**2x2C25**  
 PLANTA  
 ESC 1:50



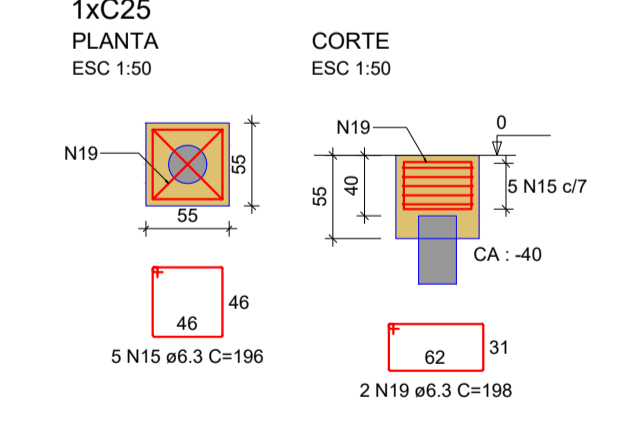
**B120**  
**2x2C25**  
 PLANTA  
 ESC 1:50



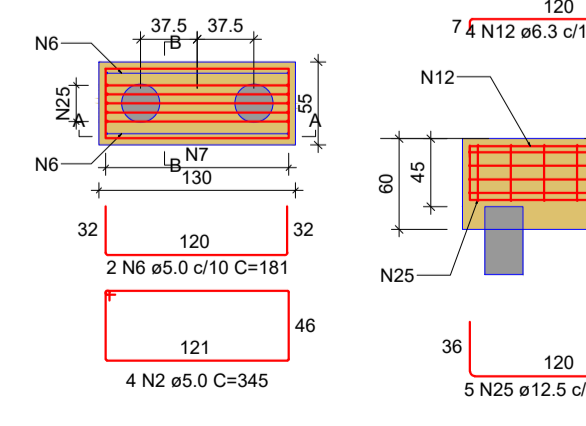
**B128=B134**  
**1x2C25**  
 PLANTA  
 ESC 1:50



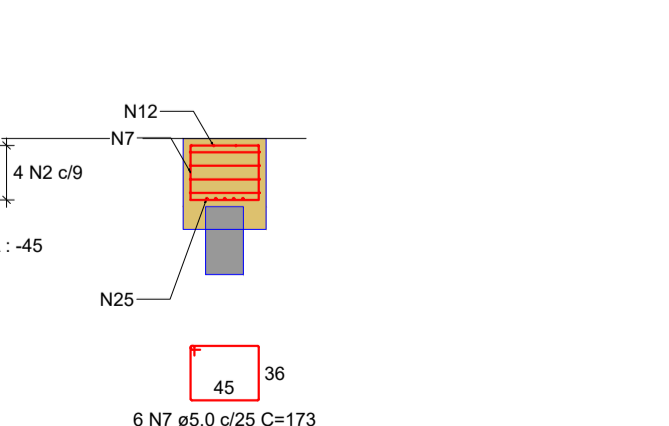
**B136**  
**2x2C25**  
 PLANTA  
 ESC 1:50



**B137**  
**2x2C25**  
 PLANTA  
 ESC 1:50



**B137**  
**2x2C25**  
 PLANTA  
 ESC 1:50



RELAÇÃO DO AÇO

ACO	N	DIAM (mm)	QUANT	C.UNIT (cm)	C.TOTAL (cm)
CASO	1	5.0	36	169	6084
	2	5.0	154	345	53130
	3	5.0	108	153	16524
	4	5.0	2	168	336
	5	5.0	6	151	906
	6	5.0	26	181	4706
	7	5.0	54	173	9342
	8	5.0	24	193	4632
	9	5.0	21	128	2708
	10	5.0	282	195	54990
	11	5.0	104	189	19656
	12	6.3	144	151	18964
	13	6.3	5	346	1730
	14	6.3	7	130	910
	15	6.3	285	196	55880
	16	6.3	14	208	2912
	17	6.3	2	210	420
	18	6.3	86	188	16188
	19	6.3	4	198	792
	20	8.0	26	208	5408
	21	10.0	14	167	2338
	22	10.0	54	187	10098
	23	10.0	7	207	1449
	24	12.5	29	166	4814
	25	12.5	11	186	2046
	26	12.5	6	206	1236
	27	15.0	6	164	984
	28	16.0	4	185	740
	29	16.0	44	185	7260

RESUMO DO AÇO

ACO	DIAM (mm)	C.TOTAL (m)	PESO + 0% (kg)
CASO	6.3	976.6	239
	8.0	54.1	21.3
	10.0	138.8	85.6
	12.5	81	75
	16.0	89.8	141.8
	5.0	1730.2	266.7

PESO TOTAL (kg)  
 CASO 565.7  
 CASO 266.7

Volume de concreto (C-30) = 27.56 m³  
 Área de forma = 182.97 m²

**PREFEITURA MUNICIPAL DE BADY BASSITT - SP**  
 CNPJ 45.093.267/0001-09

**CRS ENGENHARIA**

Objeto: **ESTRUTURA DE CONCRETO**  
 EDIFICAÇÃO: DET. BLOCOS DE FUNDAÇÃO

Folha: **CON 04/31**

Projeto: **CONSTRUÇÃO DE UMA ESCOLA DE ENSINO FUNDAMENTAL I NA ÁREA INSTITUCIONAL DO JARDIM TANGARÁ, EM BADY BASSITT - SP**

Proprietário: **PREFEITURA MUNICIPAL DE BADY BASSITT - SP**

Engenheiro: **JOSMAR NASCIMENTO RODRIGUES**  
 ENGENHEIRO CIVIL  
 CREA 53761/SP-04

Município: **BADY BASSITT** Estado: **SP**

Matrícula / Transcrição: - Contrato nº: -

Coordenadas Geográficas / SAD69:  
 20°55'35.8"S 49°27'52.0"W

Escala: **INDICADAS** Data: **04/11/2021** Data Última Revisão: - ART nº: **2.802.723.021.146.630-9**